

# Le Velo Cafe

## 48 Baywater Drive, Wentworth Point, NSW, 2127



Location Plan

Drawing List		
N#	View Name	Scale Value 1:
A01	Sun Study 21.06.23 9am	2000
A01	Sun Study 21.06.23 12pm	2000
A01	Sun Study 21.06.23 3pm	2000
A01	Sun Study 21.12.23 9am	2000
A01	Sun Study 21.12.23 12pm	2000
A01	Sun Study 21.12.23 3pm	2000
A02	Level 1	100
A03	Level 1 RCP	100
A04	Level 2	100
A05	Level 2 RCP	100
A06	Section 1	50
A07	Section 2	50
A08	Section 3	50
A09	Bar Detail Plan	20
A10	Bar elevation 1	20
A11	Bar elevation 2	20
A12	Bar elevation 3	20
A13	Section 4	20
A13	Bar Detail Section	5
A14	Stair lower plan	20
A14	Stair upper plan	20
A15	StairElevation1	20
A15	StairElevation2	20
A16	Stair Section	20
A16	Stair detail section 1	5
A16	Stair detail section 2	5

### Room List

Level	Name	Area
Level 1	Airlock	5 m <sup>2</sup>
Level 1	Bar	26 m <sup>2</sup>
Level 1	Cold Room	10 m <sup>2</sup>
Level 1	Commercial Kitchen	32 m <sup>2</sup>
Level 1	D	4 m <sup>2</sup>
Level 1	F	11 m <sup>2</sup>
Level 1	M	8 m <sup>2</sup>
Level 1	Seating Area	148 m <sup>2</sup>
Level 1	Staff Room	4 m <sup>2</sup>
Level 1	Storage	11 m <sup>2</sup>
Level 1	Storage	5 m <sup>2</sup>
Level 1	Storage	3 m <sup>2</sup>
Level 2	Exhibition Space	117 m <sup>2</sup>

### LEGEND

Cut Material	
	Plasterboard
	Stainless Steel
	Tiles
	Timber
	Concrete

Wall Type	
WT1	Timber Stud Wall 100x50 w/ 13mm PB on each side
WT2	Timber Stud Wall 100x50 w/ 13mm PB on one side and 13mm FC + 2mm glue + 10mm Tile on the other side
WT3	Timber Stud Wall 100x50 w/ 13mm FC + 2mm glue + 10mm Tile on each side
WT4	13mm FC + 2mm glue + 10mm Tile
WT5	Timber Stud Wall 100x50 w/ 13mm FC + 2mm glue + 10mm Tile on one side
WT6	Toilet Cubicle Partition 30mm

Door Type	
D01	Flush Door 2100x900
D02	Flush Door 2100x1010

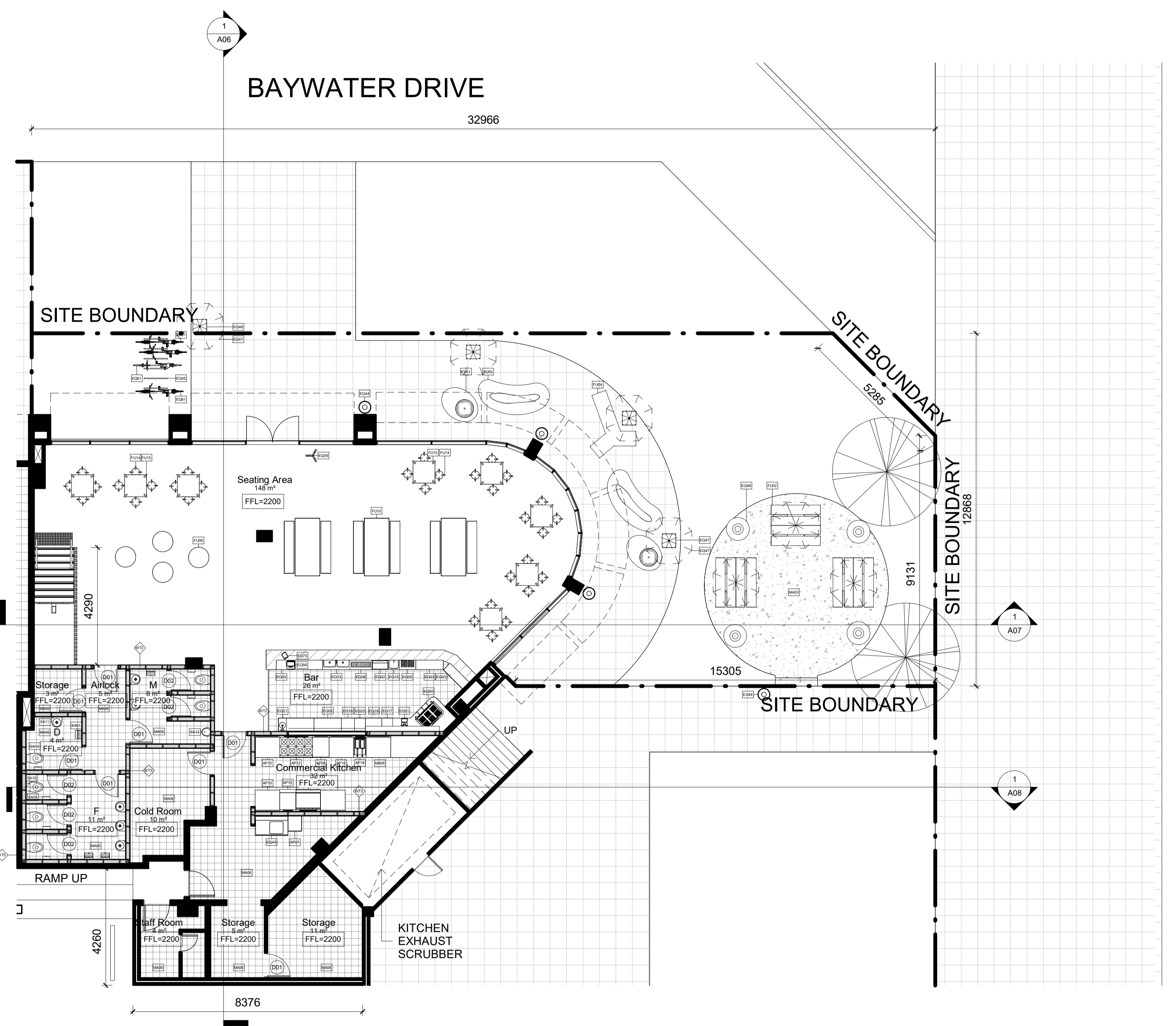
  

Abbreviations	
AP	Appliances
BT	Benchtop
COS	Check on Site
CL	Centre Line
D	Door
DA	Development Application
EQ	Equipment
FC	Fibre Cement
FCL	Finish Ceiling Level
FFL	Finish Floor Level
FU	Furniture
LI	Lighting
PB	Plasterboard
POS	Point of Sale
RCP	Reflected Ceiling Plan
SB	Splashback
SK	Skirting
SS	Stainless Steel
WT	Wall Type
W/	With

Tag Legend	
AP01	Appliances
AP02	Appliances
AP03	Appliances
AP04	Appliances
AP05	Appliances
AP06	Appliances
AP07	Appliances
AP08	Appliances
AP09	Appliances
AP10	Appliances
AP11	Appliances
AP12	Appliances
AP13	Appliances
AP14	Appliances
AP15	Appliances
AP16	Appliances
AP17	Appliances
AP18	Appliances
AP19	Appliances
AP20	Appliances
AP21	Appliances
AP22	Appliances
AP23	Appliances
AP24	Appliances
AP25	Appliances
AP26	Appliances
AP27	Appliances
AP28	Appliances
AP29	Appliances
AP30	Appliances
AP31	Appliances
AP32	Appliances
AP33	Appliances
AP34	Appliances
AP35	Appliances
AP36	Appliances
AP37	Appliances
AP38	Appliances
AP39	Appliances
AP40	Appliances
AP41	Appliances
AP42	Appliances
AP43	Appliances
AP44	Appliances
AP45	Appliances
AP46	Appliances
AP47	Appliances
AP48	Appliances
AP49	Appliances
AP50	Appliances
AP51	Appliances
AP52	Appliances
AP53	Appliances
AP54	Appliances
AP55	Appliances
AP56	Appliances
AP57	Appliances
AP58	Appliances
AP59	Appliances
AP60	Appliances
AP61	Appliances
AP62	Appliances
AP63	Appliances
AP64	Appliances
AP65	Appliances
AP66	Appliances
AP67	Appliances
AP68	Appliances
AP69	Appliances
AP70	Appliances
AP71	Appliances
AP72	Appliances
AP73	Appliances
AP74	Appliances
AP75	Appliances
AP76	Appliances
AP77	Appliances
AP78	Appliances
AP79	Appliances
AP80	Appliances
AP81	Appliances
AP82	Appliances
AP83	Appliances
AP84	Appliances
AP85	Appliances
AP86	Appliances
AP87	Appliances
AP88	Appliances
AP89	Appliances
AP90	Appliances
AP91	Appliances
AP92	Appliances
AP93	Appliances
AP94	Appliances
AP95	Appliances
AP96	Appliances
AP97	Appliances
AP98	Appliances
AP99	Appliances
AP100	Appliances

Revisions	Description	Ver. App'd	Do not scale drawings. Use figured dimensions only. Check and verify levels and dimensions on site prior to commencement of any work, the preparation of drawings or the fabrication of components. This drawing is copyright and can not be reproduced without written consent.	Client	True North	Project	Drawing Title	Scale	Drawing No	Issue
No	Date			Marion & Will Baker		Billy Blue College of Design 46-52 Mountain Street, Ultimo, NSW 2007, Australia +61 (0)2 9999 9999	Cover Page	N/A	A00	A
A	10.12.2023	XX App'd				  	48 Baywater Drive, Wentworth Point, NSW, 2127 Project number 23.001	Date	10.12.2023	Drawn by SF
							Drawing Status			CONSTRUCTION DRAWINGS NOT FOR CONSTRUCTION

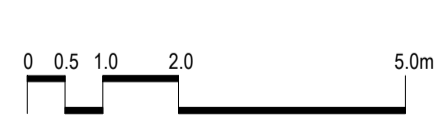




PARRAMATTA RIVER

LEGEND			
<b>Cut Material</b>			
	Existing Structure		
	Plasterboard		
	Stainless Steel		
	Tiles		
	Timber		
	Concrete		
<b>Wall Type</b>			
	WT1 Timber Stud Wall 100x50 w/ 13mm PB on each side		
	WT2 Timber Stud Wall 100x50 w/ 13mm PB on one side and 13mm FC + 2mm glue + 10mm Tile on the other side		
	WT3 Timber Stud Wall 100x50 w/ 13mm FC + 2mm glue + 10mm Tile on each side		
	WT4 13mm FC + 2mm glue + 10mm Tile		
	WT5 Timber Stud Wall 100x50 w/ 13mm FC + 2mm glue + 10mm Tile on one side		
	WT6 Toilet Cubicle Partition 30mm		
<b>Door Type</b>			
	D01 Flush Door 2100x900		
	D02 Flush Door 2100x1010		
<b>Abbreviations</b>			
AP	Appliances	PB	Plasterboard
BT	Benchtop	RCP	Point of Sale
COS	Check on Site	RCP	Reflected Ceiling Plan
CL	Centre Line	SB	Splashback
D	Door	SK	Skirting
DA	Development Application	SS	Stainless Steel
EQ	Equipment	WT	Wall Type
FC	Fibre Cement	W/	With
FCL	Finish Ceiling Level		
FFL	Finish Floor Level		
FU	Furniture		
LI	Lighting		
<b>Tag Legend</b>			
<p>AP01 - AP17: Appliances (various models and brands)            BT01 - BT02: Benchtops            CL01 - CL02: Centre Lines            D01 - D02: Doors            EQ01 - EQ17: Equipment (various models and brands)            FC01 - FC02: Fibre Cement            FCL01 - FCL02: Finish Ceiling Levels            FFL01 - FFL02: Finish Floor Levels            FU01 - FU02: Furniture            LI01 - LI02: Lighting            PB01 - PB02: Plasterboard            RCP01 - RCP02: Point of Sale            SB01 - SB02: Splashback            SK01 - SK02: Skirting            SS01 - SS02: Stainless Steel            WT01 - WT06: Wall Types            W01 - W02: With</p>			

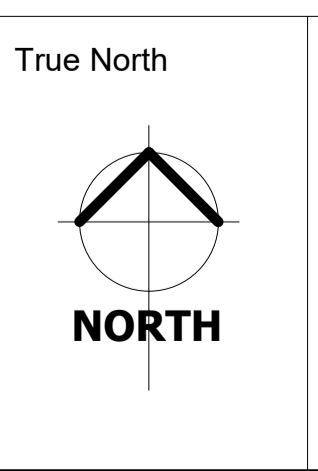
1 Level 1  
1:100



Revisions	Description	Ver. App'd
No Date		
A 10.12.2023	CONSTRUCTION DRAWINGS	XX App'd

Do not scale drawings. Use figured dimensions only. Check and verify levels and dimensions on site prior to commencement of any work, the preparation of drawings or the fabrication of components. This drawing is copyright and can not be reproduced without written consent.

Client  
Marion & Will Baker

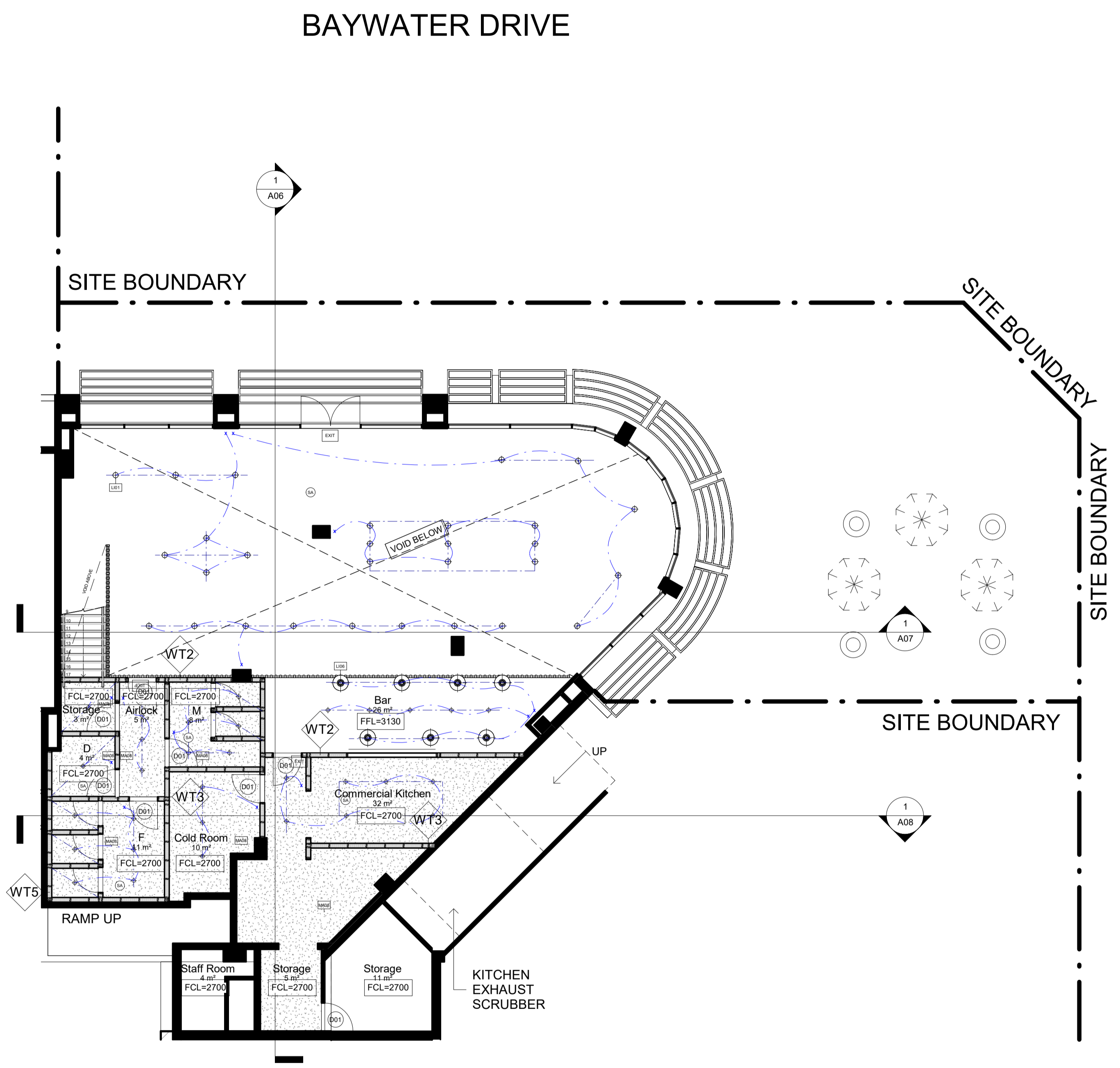


Billy Blue College of Design  
46-52 Mountain Street, Ultimo, NSW 2007, Australia  
+61 (0)2 9999 9999

Project  
IDC302A Assessment Brief 1  
48 Baywater Drive, Wentworth Point, NSW, 2127  
Project number  
23.001

Drawing Title  
Level 1 Floor Plan  
Drawing Status  
CONSTRUCTION DRAWINGS  
NOT FOR CONSTRUCTION

Scale  
1:100  
Date  
10.12.2023  
Drawing No  
A02  
Issue  
A  
Drawn by  
SF



**1 Level 1 RCP**  
1 : 100

### LEGEND

**Cut Material**

- Existing Structure
- Plasterboard
- Stainless Steel
- Tiles
- Timber
- Concrete

**Wall Type**

- WT1 Timber Stud Wall 100x50 w/ 13mm PB on each side and 13mm FC + 2mm glue + 10mm Tile on the other side
- WT2 Timber Stud Wall 100x50 w/ 13mm FC + 2mm glue + 10mm Tile on each side
- WT3 13mm FC + 2mm glue + 10mm Tile
- WT4 Timber Stud Wall 100x50 w/ 13mm FC + 2mm glue + 10mm Tile on one side
- WT5 Toilet Cubicle Partition 30mm

**Door Type**

- D01 Flush Door 2100x900
- D02 Flush Door 2100x1010

**Abbreviations**

- AP Appliances
- BT Benchtop
- COS Check on Site
- CL Centre Line
- D Door
- DA Development Application
- EQ Equipment
- FC Fibre Cement
- FCL Finish Ceiling Level
- FLL Finish Floor Level
- FU Furniture
- LI Lighting
- PB Plasterboard
- RCP Reflected Ceiling Plan
- SB Skirting
- SS Stainless Steel
- WT Wall Type
- W/ With

**Tag Legend**

- AP01 AP02 AP03 AP04 AP05 AP06 AP07 AP08 AP09 AP10 AP11 AP12 AP13 AP14 AP15 AP16 AP17 AP18 AP19 AP20 AP21 AP22 AP23 AP24 AP25 AP26 AP27 AP28 AP29 AP30 AP31 AP32 AP33 AP34 AP35 AP36 AP37 AP38 AP39 AP40 AP41 AP42 AP43 AP44 AP45 AP46 AP47 AP48 AP49 AP50 AP51 AP52 AP53 AP54 AP55 AP56 AP57 AP58 AP59 AP60 AP61 AP62 AP63 AP64 AP65 AP66 AP67 AP68 AP69 AP70 AP71 AP72 AP73 AP74 AP75 AP76 AP77 AP78 AP79 AP80 AP81 AP82 AP83 AP84 AP85 AP86 AP87 AP88 AP89 AP90 AP91 AP92 AP93 AP94 AP95 AP96 AP97 AP98 AP99 AP100

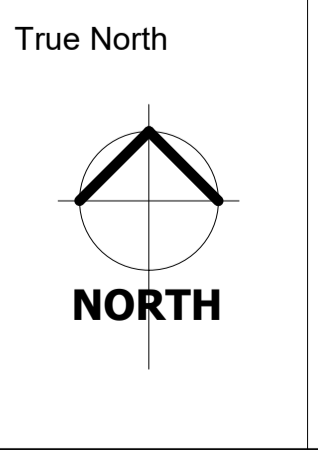
**RCP LEGEND**

- SA Smoke Alarm
- Lighting fixtures grid
- Lighting fixtures wiring
- Single switch
- LI01 Beat flat tall pendant by Tom Dixon
- LI03 Flood pendant by Tom Dixon
- LI06 PH50 pendant by Louis Poulsen

Revisions	Description	Ver. App'd
No Date		
A 10.12.2023	CONSTRUCTION DRAWINGS	XX App'd

Do not scale drawings. Use figured dimensions only. Check and verify levels and dimensions on site prior to commencement of any work, the preparation of drawings or the fabrication of components.  
This drawing is copyright and can not be reproduced without written consent.

Client  
**Marion & Will Baker**



Billy Blue College of Design  
46-52 Mountain Street, Ultimo, NSW 2007, Australia  
+61 (0)2 9999 9999

Project  
**IDC302A Assessment Brief 1**

48 Baywater Drive, Wentworth Point, NSW, 2127

Project number  
**23.001**

Drawing Title  
**Level 1 RCP**

Drawing Status  
**CONSTRUCTION DRAWINGS NOT FOR CONSTRUCTION**

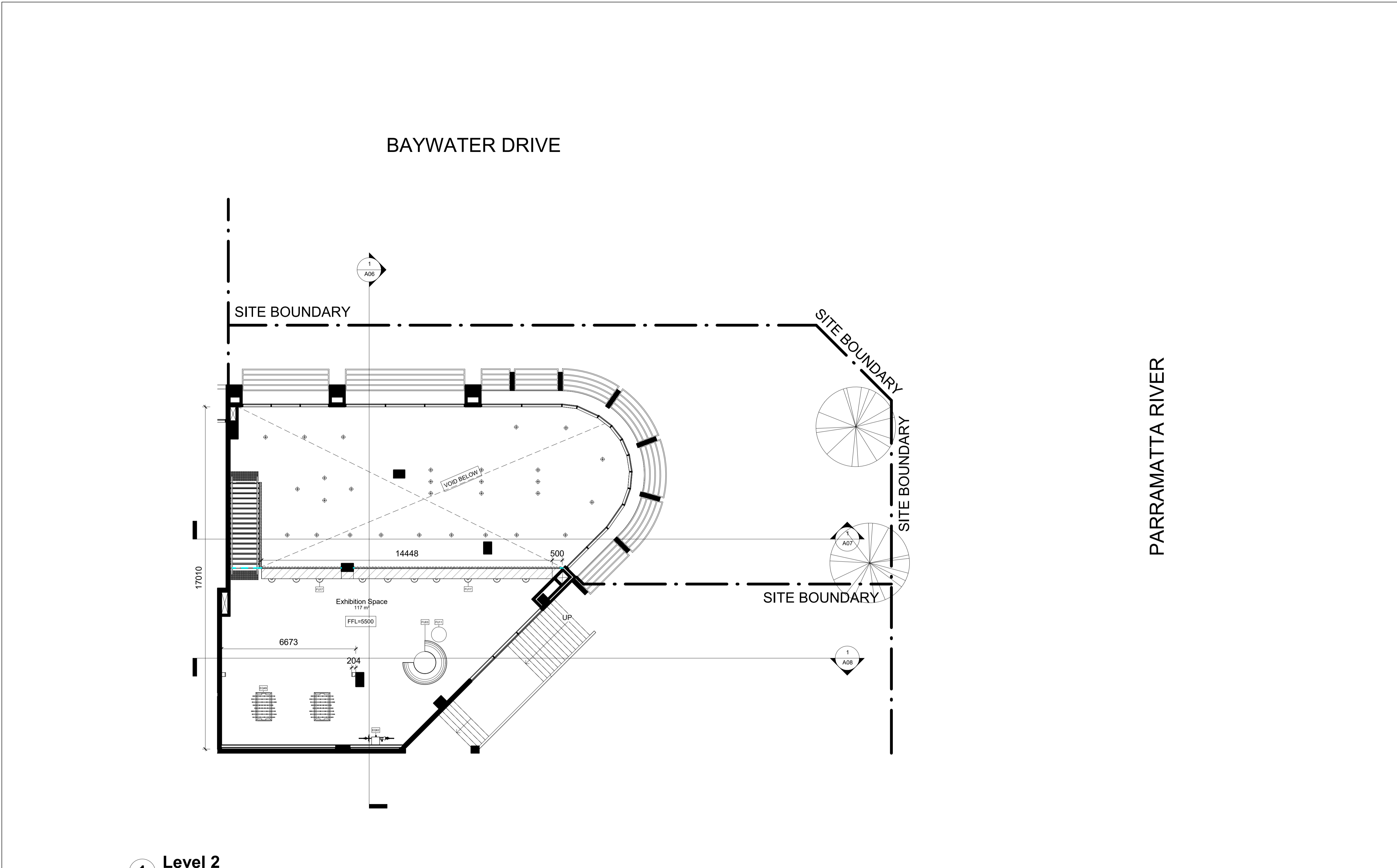
Scale  
**1:100**

Drawing No  
**A03**

Issue  
**A**

Date  
**10.12.2023**

Drawn by  
**SF**



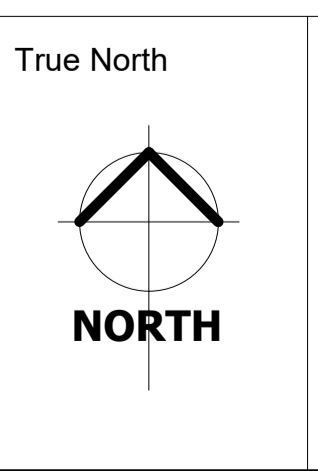
LEGEND			
<b>Cut Material</b>			
	Existing Structure		
	Plasterboard		
	Stainless Steel		
	Tiles		
	Timber		
	Concrete		
<b>Wall Type</b>			
	Timber Stud Wall 100x50 w/ 13mm PB on each side		
	Timber Stud Wall 100x50 w/ 13mm PB on one side and 13mm FC + 2mm glue + 10mm Tile on the other side		
	Timber Stud Wall 100x50 w/ 13mm FC + 2mm glue + 10mm Tile on each side		
	13mm FC + 2mm glue + 10mm Tile		
	Timber Stud Wall 100x50 w/ 13mm FC + 2mm glue + 10mm Tile on one side		
	Toilet Cubicle Partition 30mm		
<b>Door Type</b>			
	Flush Door 2100x900		
	Flush Door 2100x1010		
<b>Abbreviations</b>			
AP	Appliances	PB	Plasterboard
BT	Benchtop	POS	Point of Sale
COS	Check on Site	RCP	Reflected Ceiling Plan
CL	Centre Line	SB	Splashback
D	Door	SK	Skirting
DA	Development Application	SS	Stainless Steel
EQ	Equipment	WT	Wall Type
FC	Fibre Cement	W	With
FCL	Finish Ceiling Level		
FFL	Finish Floor Level		
FU	Furniture		
LI	Lighting		
<b>Tag Legend</b>			
<p>AP01 AP02 AP03 AP04 AP05 AP06 AP07 AP08 AP09 AP10 AP11 AP12 AP13 AP14 AP15 AP16 AP17 AP18 AP19 AP20 AP21 AP22 AP23 AP24 AP25 AP26 AP27 AP28 AP29 AP30 AP31 AP32 AP33 AP34 AP35 AP36 AP37 AP38 AP39 AP40 AP41 AP42 AP43 AP44 AP45 AP46 AP47 AP48 AP49 AP50 AP51 AP52 AP53 AP54 AP55 AP56 AP57 AP58 AP59 AP60 AP61 AP62 AP63 AP64 AP65 AP66 AP67 AP68 AP69 AP70 AP71 AP72 AP73 AP74 AP75 AP76 AP77 AP78 AP79 AP80 AP81 AP82 AP83 AP84 AP85 AP86 AP87 AP88 AP89 AP90 AP91 AP92 AP93 AP94 AP95 AP96 AP97 AP98 AP99 AP100</p>			

1 Level 2  
1 : 100

Revisions		
No	Date	Description
A	10.12.2023	CONSTRUCTION DRAWINGS

Do not scale drawings. Use figured dimensions only. Check and verify levels and dimensions on site prior to commencement of any work, the preparation of drawings or the fabrication of components. This drawing is copyright and can not be reproduced without written consent.

Client  
Marion & Will Baker



Billy Blue College of Design  
46-52 Mountain Street, Ultimo, NSW 2007, Australia  
+61 (0)2 9999 9999

Project  
IDC302A Assessment Brief 1

48 Baywater Drive, Wentworth Point, NSW, 2127

Project number  
23.001

Drawing Title  
Level 2 Floor Plan

Drawing Status  
CONSTRUCTION DRAWINGS  
NOT FOR CONSTRUCTION

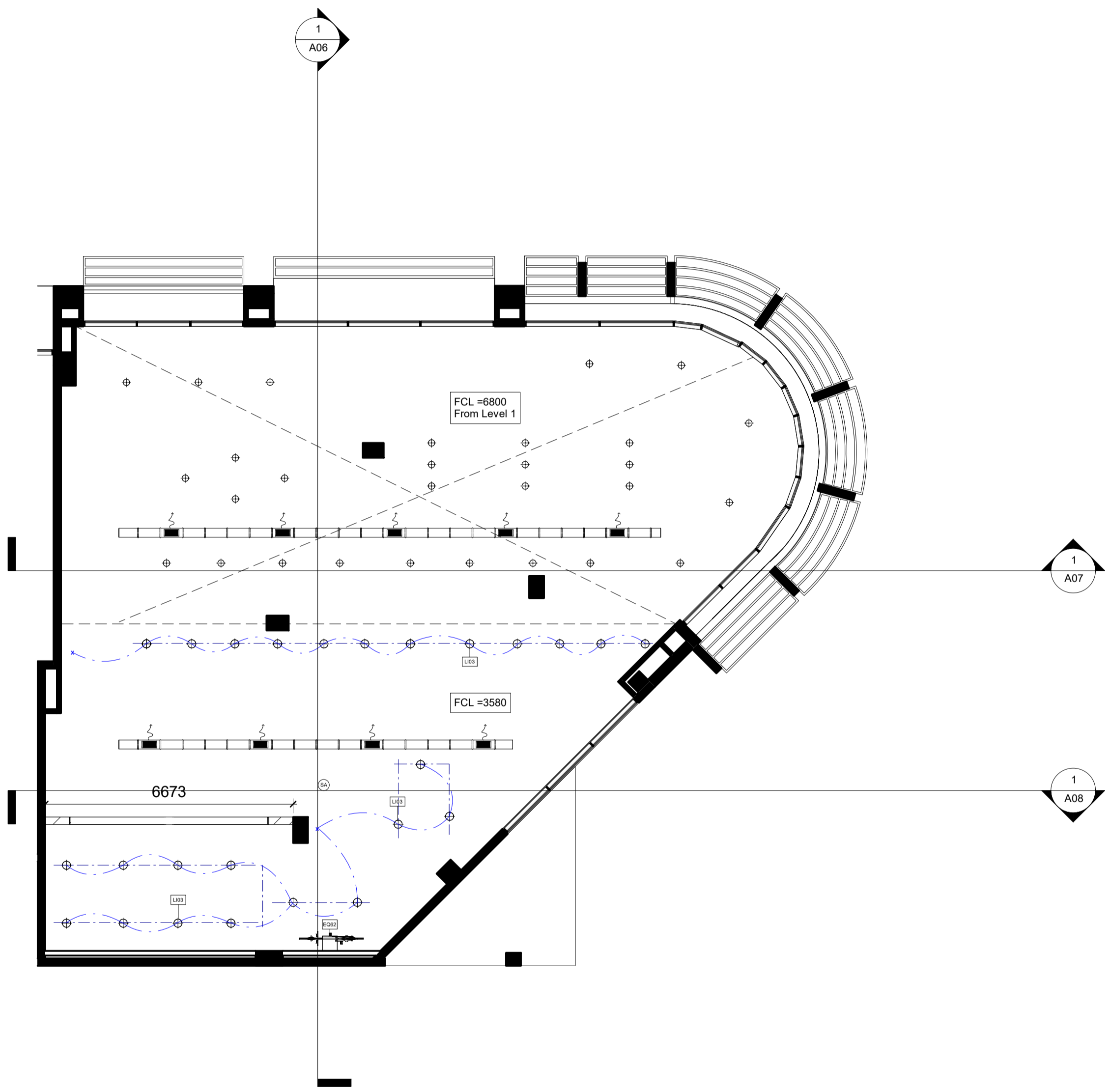
Scale  
1:100

Drawing No  
A04

Issue  
A

Date  
10.12.2023

Drawn by  
SF



**1** Level 2 RCP  
1 : 100

### LEGEND

**Cut Material**

- Existing Structure
- Plasterboard
- Stainless Steel
- Tiles
- Timber
- Concrete

**Wall Type**

- WT1 Timber Stud Wall 100x50 w/ 13mm PB on each side
- WT2 Timber Stud Wall 100x50 w/ 13mm PB on one side and 13mm FC + 2mm glue + 10mm Tile on the other side
- WT3 Timber Stud Wall 100x50 w/ 13mm FC + 2mm glue + 10mm Tile on each side
- WT4 13mm FC + 2mm glue + 10mm Tile
- WT5 Timber Stud Wall 100x50 w/ 13mm FC + 2mm glue + 10mm Tile on one side
- WT6 Toilet Cubicle Partition 30mm

**Door Type**

- D01 Flush Door 2100x900
- D02 Flush Door 2100x1010

**Abbreviations**

- AP Appliances
- BT Benchtop
- COS Check on Site
- CL Centre Line
- D Door
- DA Development Application
- EQ Equipment
- FC Fibre Cement
- FCL Finish Ceiling Level
- FLL Finish Floor Level
- FU Furniture
- LI Lighting
- PB Plasterboard
- POS Point of Sale
- RCP Reflected Ceiling Plan
- SB Splashback
- SK Skirting
- SS Stainless Steel
- WT Wall Type
- W With

**Tag Legend**

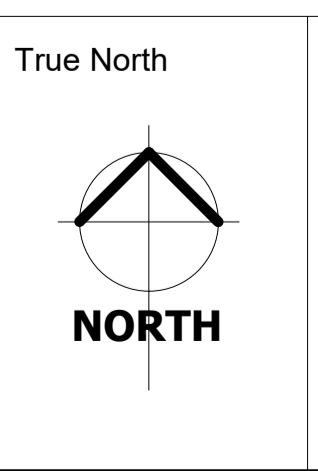
AP01 AP02 AP03 AP04 AP05 AP06 AP07 AP08 AP09 AP10 AP11 AP12 AP13 AP14 AP15 AP16 AP17 AP18 AP19 AP20 AP21 AP22 AP23 AP24 AP25 AP26 AP27 AP28 AP29 AP30 AP31 AP32 AP33 AP34 AP35 AP36 AP37 AP38 AP39 AP40 AP41 AP42 AP43 AP44 AP45 AP46 AP47 AP48 AP49 AP50 AP51 AP52 AP53 AP54 AP55 AP56 AP57 AP58 AP59 AP60 AP61 AP62 AP63 AP64 AP65 AP66 AP67 AP68 AP69 AP70 AP71 AP72 AP73 AP74 AP75 AP76 AP77 AP78 AP79 AP80 AP81 AP82 AP83 AP84 AP85 AP86 AP87 AP88 AP89 AP90 AP91 AP92 AP93 AP94 AP95 AP96 AP97 AP98 AP99 AP100



Revisions	Description	Ver. App'd
No Date		
A 10.12.2023	CONSTRUCTION DRAWINGS	XX App'd

Do not scale drawings. Use figured dimensions only. Check and verify levels and dimensions on site prior to commencement of any work, the preparation of drawings or the fabrication of components. This drawing is copyright and can not be reproduced without written consent.

Client  
**Marion & Will Baker**



Billy Blue College of Design  
46-52 Mountain Street, Ultimo, NSW 2007, Australia  
+61 (0)2 9999 9999

Project  
**IDC302A Assessment Brief 1**

48 Baywater Drive, Wentworth Point, NSW, 2127

Project number  
**23.001**

Drawing Title  
**Level 2 RCP**

Drawing Status  
**CONSTRUCTION DRAWINGS NOT FOR CONSTRUCTION**

Scale  
**1:100**

Drawing No  
**A05**

Issue  
**A**

Date  
**10.12.2023**

Drawn by  
**SF**

**LEGEND**

**Cut Material**

	Existing Structure		Tiles
	Plasterboard		Timber
	Stainless Steel		Concrete

**Wall Type**

	WT1	Timber Stud Wall 100x50 w/ 13mm PB on each side
	WT2	Timber Stud Wall 100x50 w/ 13mm PB on one side and 13mm FC + 2mm glue + 10mm Tile on the other side
	WT3	Timber Stud Wall 100x50 w/ 13mm FC + 2mm glue + 10mm Tile on each side
	WT4	13mm FC + 2mm glue + 10mm Tile
	WT5	Timber Stud Wall 100x50 w/ 13mm FC + 2mm glue + 10mm Tile on one side
	WT6	Toilet Cubicle Partition 30mm

**Door Type**

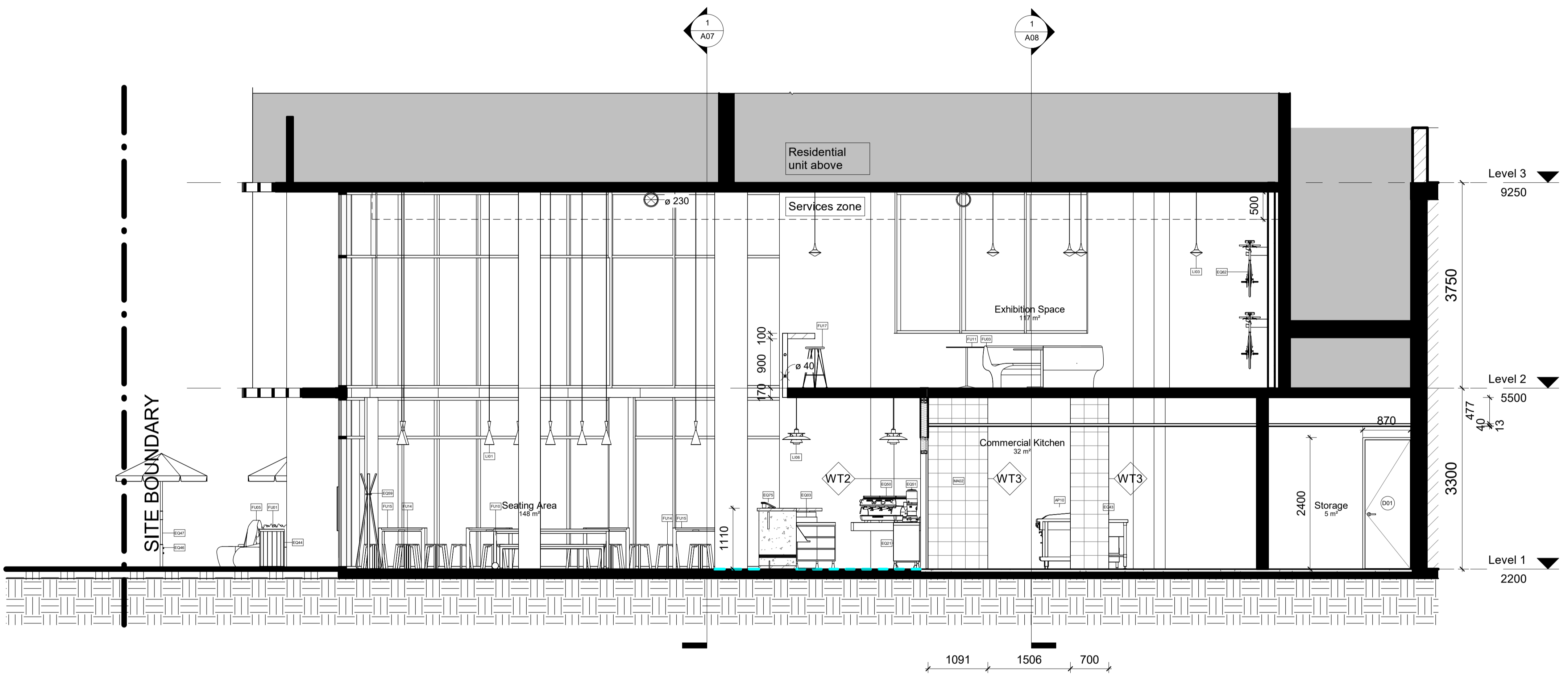
	D01	Flush Door 2100x900
	D02	Flush Door 2100x1010

**Abbreviations**

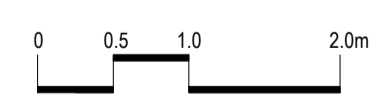
AP	Appliances	PB	Plasterboard
BT	Benchtop	POS	Point of Sale
COS	Check on Site	RCP	Reflected Ceiling Plan
CL	Centre Line	SB	Splashback
D	Door	SK	Skirting
DA	Development Application	SS	Stainless Steel
EQ	Equipment	WT	Wall Type
FC	Fibre Cement	W/	With
FCL	Finish Ceiling Level		
FFL	Finish Floor Level		
FU	Furniture		
LI	Lighting		

**Tag Legend**

AP01	Appliance: Coffee Machine 300x450 by BAC
AP02	Appliance: Dishwasher 600x450 by BAC
AP03	Appliance: Sink Unit 600x450 by BAC
AP04	Appliance: Range Hood 600x300 by BAC
AP05	Appliance: Microwave 500x300 by BAC
AP06	Appliance: Toaster 300x200 by BAC
AP07	Appliance: Kettle 200x150 by BAC
AP08	Appliance: Juicer 200x150 by BAC
AP09	Appliance: Blender 200x150 by BAC
AP10	Appliance: Coffee Maker 200x150 by BAC
AP11	Appliance: Espresso Machine 200x150 by BAC
AP12	Appliance: Ice Cream Maker 200x150 by BAC
AP13	Appliance: Smoothie Maker 200x150 by BAC
AP14	Appliance: Food Processor 200x150 by BAC
AP15	Appliance: Hand Blender 200x150 by BAC
AP16	Appliance: Stand Mixer 200x150 by BAC
AP17	Appliance: Dishwasher 600x450 by BAC
AP18	Appliance: Sink Unit 600x450 by BAC
AP19	Appliance: Range Hood 600x300 by BAC
AP20	Appliance: Microwave 500x300 by BAC
AP21	Appliance: Toaster 300x200 by BAC
AP22	Appliance: Kettle 200x150 by BAC
AP23	Appliance: Juicer 200x150 by BAC
AP24	Appliance: Blender 200x150 by BAC
AP25	Appliance: Coffee Maker 200x150 by BAC
AP26	Appliance: Espresso Machine 200x150 by BAC
AP27	Appliance: Ice Cream Maker 200x150 by BAC
AP28	Appliance: Smoothie Maker 200x150 by BAC
AP29	Appliance: Food Processor 200x150 by BAC
AP30	Appliance: Hand Blender 200x150 by BAC
AP31	Appliance: Stand Mixer 200x150 by BAC
AP32	Appliance: Dishwasher 600x450 by BAC
AP33	Appliance: Sink Unit 600x450 by BAC
AP34	Appliance: Range Hood 600x300 by BAC
AP35	Appliance: Microwave 500x300 by BAC
AP36	Appliance: Toaster 300x200 by BAC
AP37	Appliance: Kettle 200x150 by BAC
AP38	Appliance: Juicer 200x150 by BAC
AP39	Appliance: Blender 200x150 by BAC
AP40	Appliance: Coffee Maker 200x150 by BAC
AP41	Appliance: Espresso Machine 200x150 by BAC
AP42	Appliance: Ice Cream Maker 200x150 by BAC
AP43	Appliance: Smoothie Maker 200x150 by BAC
AP44	Appliance: Food Processor 200x150 by BAC
AP45	Appliance: Hand Blender 200x150 by BAC
AP46	Appliance: Stand Mixer 200x150 by BAC
AP47	Appliance: Dishwasher 600x450 by BAC
AP48	Appliance: Sink Unit 600x450 by BAC
AP49	Appliance: Range Hood 600x300 by BAC
AP50	Appliance: Microwave 500x300 by BAC
AP51	Appliance: Toaster 300x200 by BAC
AP52	Appliance: Kettle 200x150 by BAC
AP53	Appliance: Juicer 200x150 by BAC
AP54	Appliance: Blender 200x150 by BAC
AP55	Appliance: Coffee Maker 200x150 by BAC
AP56	Appliance: Espresso Machine 200x150 by BAC
AP57	Appliance: Ice Cream Maker 200x150 by BAC
AP58	Appliance: Smoothie Maker 200x150 by BAC
AP59	Appliance: Food Processor 200x150 by BAC
AP60	Appliance: Hand Blender 200x150 by BAC
AP61	Appliance: Stand Mixer 200x150 by BAC
AP62	Appliance: Dishwasher 600x450 by BAC
AP63	Appliance: Sink Unit 600x450 by BAC
AP64	Appliance: Range Hood 600x300 by BAC
AP65	Appliance: Microwave 500x300 by BAC
AP66	Appliance: Toaster 300x200 by BAC
AP67	Appliance: Kettle 200x150 by BAC
AP68	Appliance: Juicer 200x150 by BAC
AP69	Appliance: Blender 200x150 by BAC
AP70	Appliance: Coffee Maker 200x150 by BAC
AP71	Appliance: Espresso Machine 200x150 by BAC
AP72	Appliance: Ice Cream Maker 200x150 by BAC
AP73	Appliance: Smoothie Maker 200x150 by BAC
AP74	Appliance: Food Processor 200x150 by BAC
AP75	Appliance: Hand Blender 200x150 by BAC
AP76	Appliance: Stand Mixer 200x150 by BAC
AP77	Appliance: Dishwasher 600x450 by BAC
AP78	Appliance: Sink Unit 600x450 by BAC
AP79	Appliance: Range Hood 600x300 by BAC
AP80	Appliance: Microwave 500x300 by BAC
AP81	Appliance: Toaster 300x200 by BAC
AP82	Appliance: Kettle 200x150 by BAC
AP83	Appliance: Juicer 200x150 by BAC
AP84	Appliance: Blender 200x150 by BAC
AP85	Appliance: Coffee Maker 200x150 by BAC
AP86	Appliance: Espresso Machine 200x150 by BAC
AP87	Appliance: Ice Cream Maker 200x150 by BAC
AP88	Appliance: Smoothie Maker 200x150 by BAC
AP89	Appliance: Food Processor 200x150 by BAC
AP90	Appliance: Hand Blender 200x150 by BAC
AP91	Appliance: Stand Mixer 200x150 by BAC
AP92	Appliance: Dishwasher 600x450 by BAC
AP93	Appliance: Sink Unit 600x450 by BAC
AP94	Appliance: Range Hood 600x300 by BAC
AP95	Appliance: Microwave 500x300 by BAC
AP96	Appliance: Toaster 300x200 by BAC
AP97	Appliance: Kettle 200x150 by BAC
AP98	Appliance: Juicer 200x150 by BAC
AP99	Appliance: Blender 200x150 by BAC
AP100	Appliance: Coffee Maker 200x150 by BAC



**1 Section 1**  
1:50



Revisions	Description	Ver. App'd
No Date		
A 10.12.2023	CONSTRUCTION DRAWINGS	XX App'd

Do not scale drawings. Use figured dimensions only. Check and verify levels and dimensions on site prior to commencement of any work, the preparation of drawings or the fabrication of components.  
This drawing is copyright and can not be reproduced without written consent.

Client  
**Marion & Will Baker**

True North

Billy Blue College of Design  
46-52 Mountain Street, Ultimo, NSW 2007, Australia  
+61 (0)2 9999 9999

LAUREATE INTERNATIONAL UNIVERSITIES

Project  
**IDC302A Assessment Brief 1**

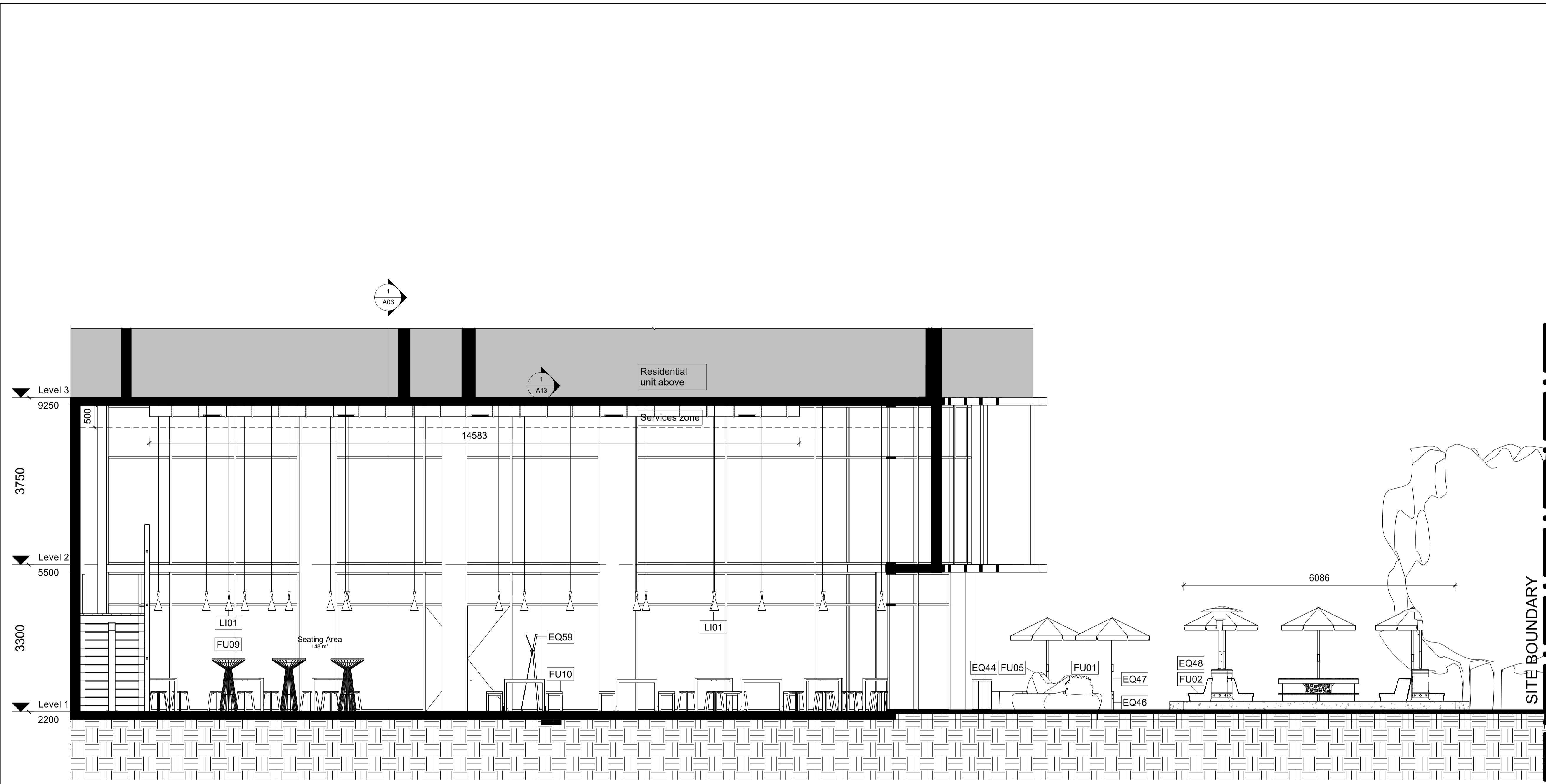
48 Baywater Drive, Wentworth Point, NSW, 2127

Project number  
**23.001**

Drawing Title  
**Section 1**

Drawing Status  
**CONSTRUCTION DRAWINGS NOT FOR CONSTRUCTION**

Scale	Drawing No	Issue
1:50	A06	A
Date	10.12.2023	
Drawn by	SF	



### LEGEND

Cut Material	
	Existing Structure
	Plasterboard
	Stainless Steel
	Tiles
	Timber
	Concrete

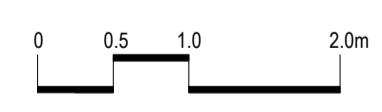
Wall Type	
	WT1 Timber Stud Wall 100x50 w/ 13mm PB on each side
	WT2 Timber Stud Wall 100x50 w/ 13mm PB on one side and 13mm FC + 2mm glue + 10mm Tile on the other side
	WT3 Timber Stud Wall 100x50 w/ 13mm FC + 2mm glue + 10mm Tile on each side
	WT4 13mm FC + 2mm glue + 10mm Tile
	WT5 Timber Stud Wall 100x50 w/ 13mm FC + 2mm glue + 10mm Tile on one side
	WT6 Toilet Cubicle Partition 30mm

Door Type	
	D01 Flush Door 2100x900
	D02 Flush Door 2100x1010

Abbreviations	
AP	Appliances
BT	Benchtop
CS	Check on Site
CL	Centre Line
D	Door
DA	Development Application
EQ	Equipment
FC	Fibre Cement
FCL	Finish Ceiling Level
FFL	Finish Floor Level
FU	Furniture
LI	Lighting
PB	Plasterboard
POS	Point of Sale
RCP	Reflected Ceiling Plan
SB	Splishback
SK	Skirting
SS	Stainless Steel
WT	Wall Type
W	With

Tag Legend	
EQ01	Equipeur de cuisine B141145 by M&C
EQ02	Equipeur de cuisine B141145 by M&C
EQ03	Equipeur de cuisine B141145 by M&C
EQ04	Equipeur de cuisine B141145 by M&C
EQ05	Equipeur de cuisine B141145 by M&C
EQ06	Equipeur de cuisine B141145 by M&C
EQ07	Equipeur de cuisine B141145 by M&C
EQ08	Equipeur de cuisine B141145 by M&C
EQ09	Equipeur de cuisine B141145 by M&C
EQ10	Equipeur de cuisine B141145 by M&C
EQ11	Equipeur de cuisine B141145 by M&C
EQ12	Equipeur de cuisine B141145 by M&C
EQ13	Equipeur de cuisine B141145 by M&C
EQ14	Equipeur de cuisine B141145 by M&C
EQ15	Equipeur de cuisine B141145 by M&C
EQ16	Equipeur de cuisine B141145 by M&C
EQ17	Equipeur de cuisine B141145 by M&C
EQ18	Equipeur de cuisine B141145 by M&C
EQ19	Equipeur de cuisine B141145 by M&C
EQ20	Equipeur de cuisine B141145 by M&C
EQ21	Equipeur de cuisine B141145 by M&C
EQ22	Equipeur de cuisine B141145 by M&C
EQ23	Equipeur de cuisine B141145 by M&C
EQ24	Equipeur de cuisine B141145 by M&C
EQ25	Equipeur de cuisine B141145 by M&C
EQ26	Equipeur de cuisine B141145 by M&C
EQ27	Equipeur de cuisine B141145 by M&C
EQ28	Equipeur de cuisine B141145 by M&C
EQ29	Equipeur de cuisine B141145 by M&C
EQ30	Equipeur de cuisine B141145 by M&C
EQ31	Equipeur de cuisine B141145 by M&C
EQ32	Equipeur de cuisine B141145 by M&C
EQ33	Equipeur de cuisine B141145 by M&C
EQ34	Equipeur de cuisine B141145 by M&C
EQ35	Equipeur de cuisine B141145 by M&C
EQ36	Equipeur de cuisine B141145 by M&C
EQ37	Equipeur de cuisine B141145 by M&C
EQ38	Equipeur de cuisine B141145 by M&C
EQ39	Equipeur de cuisine B141145 by M&C
EQ40	Equipeur de cuisine B141145 by M&C
EQ41	Equipeur de cuisine B141145 by M&C
EQ42	Equipeur de cuisine B141145 by M&C
EQ43	Equipeur de cuisine B141145 by M&C
EQ44	Equipeur de cuisine B141145 by M&C
EQ45	Equipeur de cuisine B141145 by M&C
EQ46	Equipeur de cuisine B141145 by M&C
EQ47	Equipeur de cuisine B141145 by M&C
EQ48	Equipeur de cuisine B141145 by M&C
EQ49	Equipeur de cuisine B141145 by M&C
EQ50	Equipeur de cuisine B141145 by M&C
EQ51	Equipeur de cuisine B141145 by M&C
EQ52	Equipeur de cuisine B141145 by M&C
EQ53	Equipeur de cuisine B141145 by M&C
EQ54	Equipeur de cuisine B141145 by M&C
EQ55	Equipeur de cuisine B141145 by M&C
EQ56	Equipeur de cuisine B141145 by M&C
EQ57	Equipeur de cuisine B141145 by M&C
EQ58	Equipeur de cuisine B141145 by M&C
EQ59	Equipeur de cuisine B141145 by M&C
EQ60	Equipeur de cuisine B141145 by M&C
EQ61	Equipeur de cuisine B141145 by M&C
EQ62	Equipeur de cuisine B141145 by M&C
EQ63	Equipeur de cuisine B141145 by M&C
EQ64	Equipeur de cuisine B141145 by M&C
EQ65	Equipeur de cuisine B141145 by M&C
EQ66	Equipeur de cuisine B141145 by M&C
EQ67	Equipeur de cuisine B141145 by M&C
EQ68	Equipeur de cuisine B141145 by M&C
EQ69	Equipeur de cuisine B141145 by M&C
EQ70	Equipeur de cuisine B141145 by M&C
EQ71	Equipeur de cuisine B141145 by M&C
EQ72	Equipeur de cuisine B141145 by M&C
EQ73	Equipeur de cuisine B141145 by M&C
EQ74	Equipeur de cuisine B141145 by M&C
EQ75	Equipeur de cuisine B141145 by M&C
EQ76	Equipeur de cuisine B141145 by M&C
EQ77	Equipeur de cuisine B141145 by M&C
EQ78	Equipeur de cuisine B141145 by M&C
EQ79	Equipeur de cuisine B141145 by M&C
EQ80	Equipeur de cuisine B141145 by M&C
EQ81	Equipeur de cuisine B141145 by M&C
EQ82	Equipeur de cuisine B141145 by M&C
EQ83	Equipeur de cuisine B141145 by M&C
EQ84	Equipeur de cuisine B141145 by M&C
EQ85	Equipeur de cuisine B141145 by M&C
EQ86	Equipeur de cuisine B141145 by M&C
EQ87	Equipeur de cuisine B141145 by M&C
EQ88	Equipeur de cuisine B141145 by M&C
EQ89	Equipeur de cuisine B141145 by M&C
EQ90	Equipeur de cuisine B141145 by M&C
EQ91	Equipeur de cuisine B141145 by M&C
EQ92	Equipeur de cuisine B141145 by M&C
EQ93	Equipeur de cuisine B141145 by M&C
EQ94	Equipeur de cuisine B141145 by M&C
EQ95	Equipeur de cuisine B141145 by M&C
EQ96	Equipeur de cuisine B141145 by M&C
EQ97	Equipeur de cuisine B141145 by M&C
EQ98	Equipeur de cuisine B141145 by M&C
EQ99	Equipeur de cuisine B141145 by M&C
EQ100	Equipeur de cuisine B141145 by M&C
EQ101	Equipeur de cuisine B141145 by M&C
EQ102	Equipeur de cuisine B141145 by M&C
EQ103	Equipeur de cuisine B141145 by M&C
EQ104	Equipeur de cuisine B141145 by M&C
EQ105	Equipeur de cuisine B141145 by M&C
EQ106	Equipeur de cuisine B141145 by M&C
EQ107	Equipeur de cuisine B141145 by M&C
EQ108	Equipeur de cuisine B141145 by M&C
EQ109	Equipeur de cuisine B141145 by M&C
EQ110	Equipeur de cuisine B141145 by M&C
EQ111	Equipeur de cuisine B141145 by M&C
EQ112	Equipeur de cuisine B141145 by M&C
EQ113	Equipeur de cuisine B141145 by M&C
EQ114	Equipeur de cuisine B141145 by M&C
EQ115	Equipeur de cuisine B141145 by M&C
EQ116	Equipeur de cuisine B141145 by M&C
EQ117	Equipeur de cuisine B141145 by M&C
EQ118	Equipeur de cuisine B141145 by M&C
EQ119	Equipeur de cuisine B141145 by M&C
EQ120	Equipeur de cuisine B141145 by M&C
EQ121	Equipeur de cuisine B141145 by M&C
EQ122	Equipeur de cuisine B141145 by M&C
EQ123	Equipeur de cuisine B141145 by M&C
EQ124	Equipeur de cuisine B141145 by M&C
EQ125	Equipeur de cuisine B141145 by M&C
EQ126	Equipeur de cuisine B141145 by M&C
EQ127	Equipeur de cuisine B141145 by M&C
EQ128	Equipeur de cuisine B141145 by M&C
EQ129	Equipeur de cuisine B141145 by M&C
EQ130	Equipeur de cuisine B141145 by M&C
EQ131	Equipeur de cuisine B141145 by M&C
EQ132	Equipeur de cuisine B141145 by M&C
EQ133	Equipeur de cuisine B141145 by M&C
EQ134	Equipeur de cuisine B141145 by M&C
EQ135	Equipeur de cuisine B141145 by M&C
EQ136	Equipeur de cuisine B141145 by M&C
EQ137	Equipeur de cuisine B141145 by M&C
EQ138	Equipeur de cuisine B141145 by M&C
EQ139	Equipeur de cuisine B141145 by M&C
EQ140	Equipeur de cuisine B141145 by M&C
EQ141	Equipeur de cuisine B141145 by M&C
EQ142	Equipeur de cuisine B141145 by M&C
EQ143	Equipeur de cuisine B141145 by M&C
EQ144	Equipeur de cuisine B141145 by M&C
EQ145	Equipeur de cuisine B141145 by M&C
EQ146	Equipeur de cuisine B141145 by M&C
EQ147	Equipeur de cuisine B141145 by M&C
EQ148	Equipeur de cuisine B141145 by M&C
EQ149	Equipeur de cuisine B141145 by M&C
EQ150	Equipeur de cuisine B141145 by M&C
EQ151	Equipeur de cuisine B141145 by M&C
EQ152	Equipeur de cuisine B141145 by M&C
EQ153	Equipeur de cuisine B141145 by M&C
EQ154	Equipeur de cuisine B141145 by M&C
EQ155	Equipeur de cuisine B141145 by M&C
EQ156	Equipeur de cuisine B141145 by M&C
EQ157	Equipeur de cuisine B141145 by M&C
EQ158	Equipeur de cuisine B141145 by M&C
EQ159	Equipeur de cuisine B141145 by M&C
EQ160	Equipeur de cuisine B141145 by M&C
EQ161	Equipeur de cuisine B141145 by M&C
EQ162	Equipeur de cuisine B141145 by M&C
EQ163	Equipeur de cuisine B141145 by M&C
EQ164	Equipeur de cuisine B141145 by M&C
EQ165	Equipeur de cuisine B141145 by M&C
EQ166	Equipeur de cuisine B141145 by M&C
EQ167	Equipeur de cuisine B141145 by M&C
EQ168	Equipeur de cuisine B141145 by M&C
EQ169	Equipeur de cuisine B141145 by M&C
EQ170	Equipeur de cuisine B141145 by M&C
EQ171	Equipeur de cuisine B141145 by M&C
EQ172	Equipeur de cuisine B141145 by M&C
EQ173	Equipeur de cuisine B141145 by M&C
EQ174	Equipeur de cuisine B141145 by M&C
EQ175	Equipeur de cuisine B141145 by M&C
EQ176	Equipeur de cuisine B141145 by M&C
EQ177	Equipeur de cuisine B141145 by M&C
EQ178	Equipeur de cuisine B141145 by M&C
EQ179	Equipeur de cuisine B141145 by M&C
EQ180	Equipeur de cuisine B141145 by M&C
EQ181	Equipeur de cuisine B141145 by M&C
EQ182	Equipeur de cuisine B141145 by M&C
EQ183	Equipeur de cuisine B141145 by M&C
EQ184	Equipeur de cuisine B141145 by M&C
EQ185	Equipeur de cuisine B141145 by M&C
EQ186	Equipeur de cuisine B141145 by M&C
EQ187	Equipeur de cuisine B141145 by M&C
EQ188	Equipeur de cuisine B141145 by M&C
EQ189	Equipeur de cuisine B141145 by M&C
EQ190	Equipeur de cuisine B141145 by M&C
EQ191	Equipeur de cuisine B141145 by M&C
EQ192	Equipeur de cuisine B141145 by M&C
EQ193	Equipeur de cuisine B141145 by M&C
EQ194	Equipeur de cuisine B141145 by M&C
EQ195	Equipeur de cuisine B141145 by M&C
EQ196	Equipeur de cuisine B141145 by M&C
EQ197	Equipeur de cuisine B141145 by M&C
EQ198	Equipeur de cuisine B141145 by M&C
EQ199	Equipeur de cuisine B141145 by M&C
EQ200	Equipeur de cuisine B141145 by M&C

### Section 2 1 : 50



Revisions		
No	Date	Description
A	10.12.2023	CONSTRUCTION DRAWINGS

Do not scale drawings. Use figured dimensions only. Check and verify levels and dimensions on site prior to commencement of any work, the preparation of drawings or the fabrication of components. This drawing is copyright and can not be reproduced without written consent.

Client  
**Marion & Will Baker**

True North

Billy Blue College of Design  
46-52 Mountain Street, Ultimo, NSW 2007, Australia  
+61 (0)2 9999 9999

Project  
**IDC302A Assessment Brief 1**

48 Baywater Drive, Wentworth Point, NSW, 2127

Project number  
**23.001**

Drawing Title  
**Section 2**

Drawing Status  
**CONSTRUCTION DRAWINGS NOT FOR CONSTRUCTION**

Scale  
**1:50**

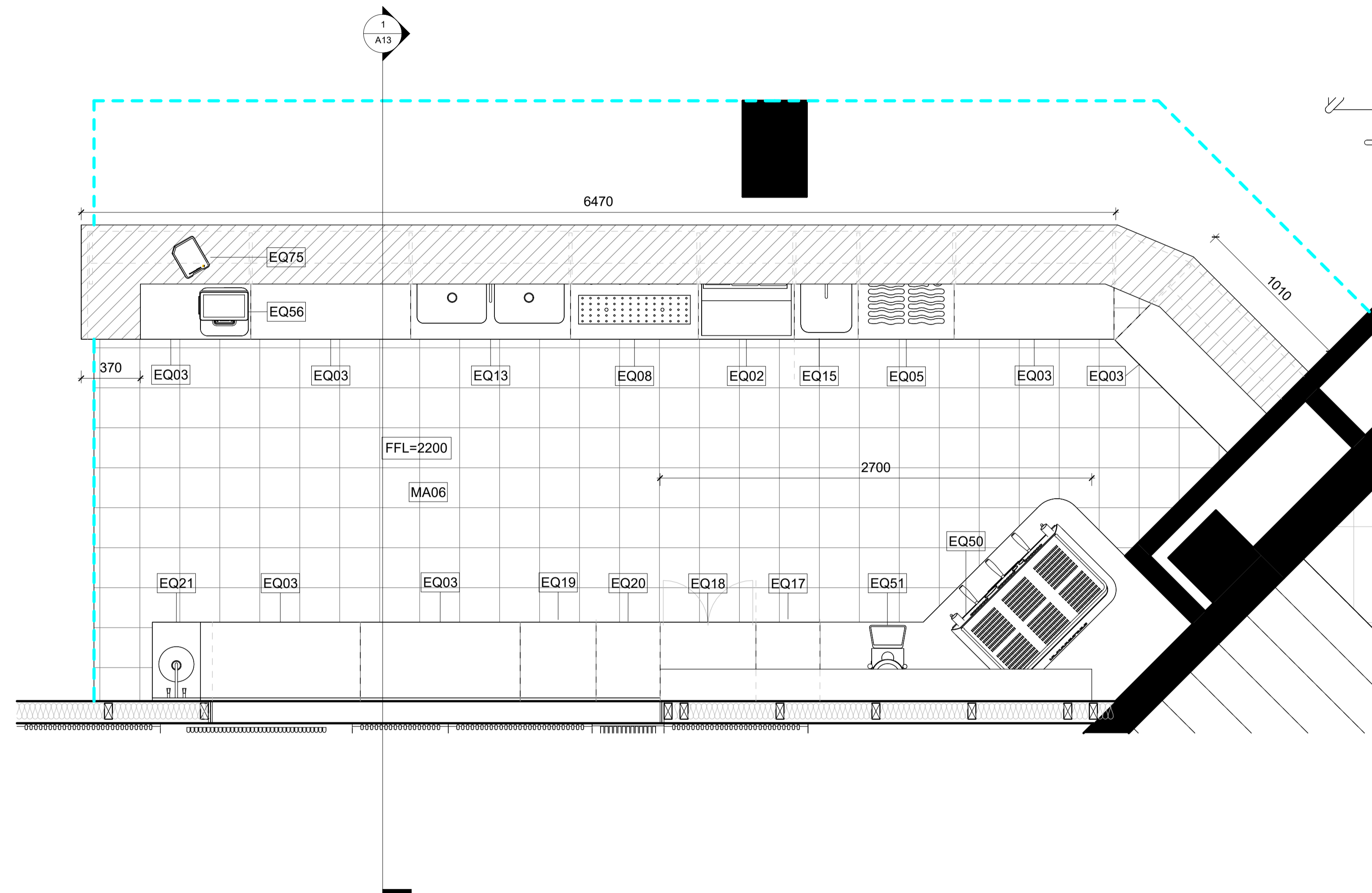
Drawing No  
**A07**

Issue  
**A**

Date  
**10.12.2023**

Drawn by  
**SF**





### LEGEND

**Cut Material**

- Existing Structure
- Plasterboard
- Stainless Steel
- Tiles
- Timber
- Concrete

**Wall Type**

- WT1: Timber Stud Wall 100x50 w/ 13mm PB on each side and 13mm FC + 2mm glue + 10mm Tile on the other side
- WT2: Timber Stud Wall 100x50 w/ 13mm PB on one side and 13mm FC + 2mm glue + 10mm Tile on the other side
- WT3: Timber Stud Wall 100x50 w/ 13mm FC + 2mm glue + 10mm Tile on each side
- WT4: 13mm FC + 2mm glue + 10mm Tile
- WT5: Timber Stud Wall 100x50 w/ 13mm FC + 2mm glue + 10mm Tile on one side
- WT6: Toilet Cubicle Partition 30mm

**Door Type**

- D01: Flush Door 2100x900
- D02: Flush Door 2100x1010

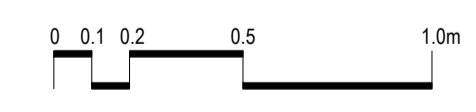
**Abbreviations**

- AP: Appliances
- BT: Benchtop
- COS: Check on Site
- CL: Centre Line
- D: Door
- DA: Development Application
- EQ: Equipment
- FC: Fibre Cement
- FCL: Finish Ceiling Level
- FFL: Finish Floor Level
- FU: Furniture
- LI: Lighting
- PB: Plasterboard
- POS: Point of Sale
- RCP: Reflected Ceiling Plan
- SB: Skirting
- SS: Stainless Steel
- WT: Wall Type
- W/: With

**Tag Legend**

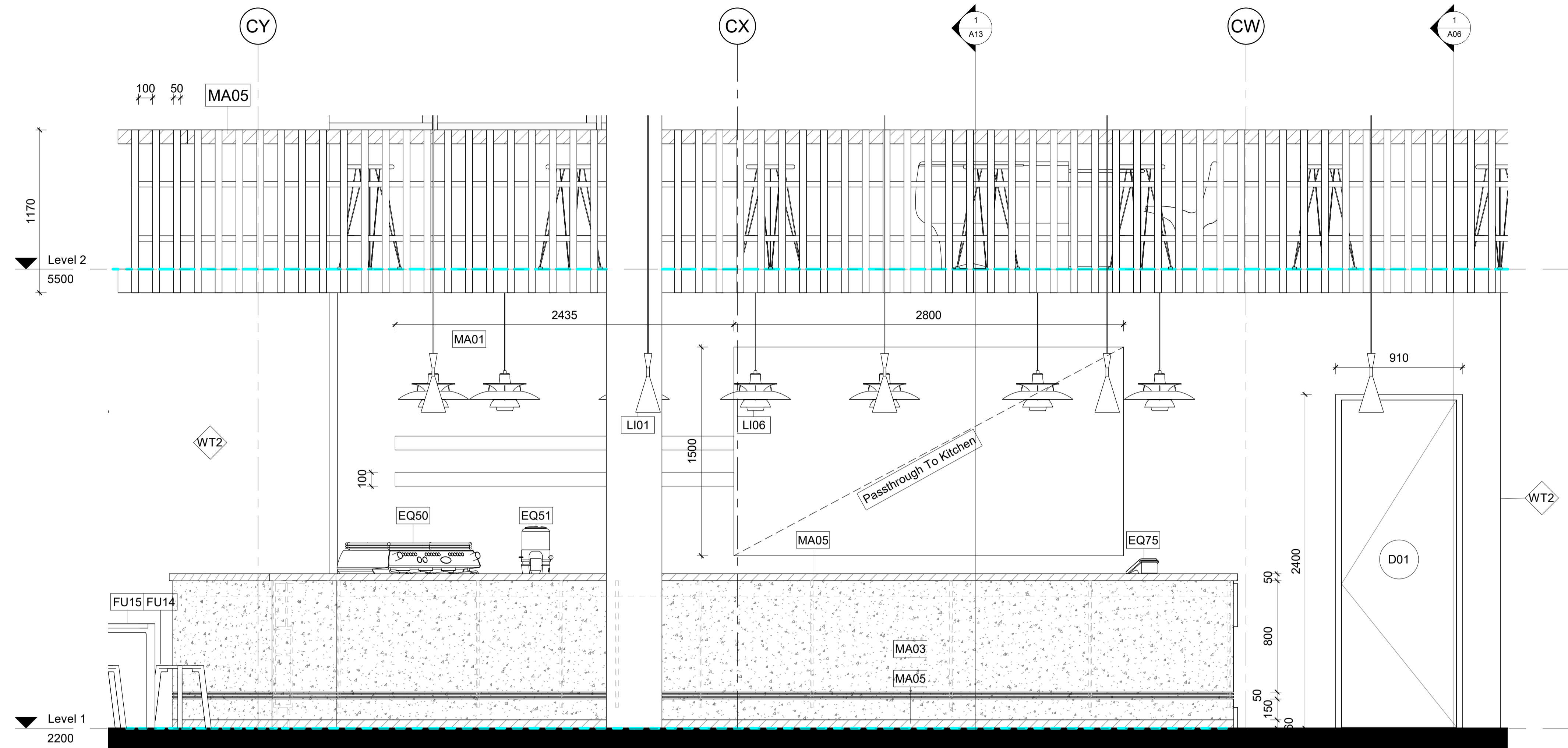
AP01: Appliances 810x150 by MFC  
 AP02: Bench Top 810x150 by MFC  
 AP03: Bench Top 810x150 by MFC  
 AP04: Bench Top 810x150 by MFC  
 AP05: Bench Top 810x150 by MFC  
 AP06: Bench Top 810x150 by MFC  
 AP07: Bench Top 810x150 by MFC  
 AP08: Bench Top 810x150 by MFC  
 AP09: Bench Top 810x150 by MFC  
 AP10: Bench Top 810x150 by MFC  
 AP11: Bench Top 810x150 by MFC  
 AP12: Bench Top 810x150 by MFC  
 AP13: Bench Top 810x150 by MFC  
 AP14: Bench Top 810x150 by MFC  
 AP15: Bench Top 810x150 by MFC  
 AP16: Bench Top 810x150 by MFC  
 AP17: Bench Top 810x150 by MFC  
 AP18: Bench Top 810x150 by MFC  
 AP19: Bench Top 810x150 by MFC  
 AP20: Bench Top 810x150 by MFC  
 AP21: Bench Top 810x150 by MFC  
 AP22: Bench Top 810x150 by MFC  
 AP23: Bench Top 810x150 by MFC  
 AP24: Bench Top 810x150 by MFC  
 AP25: Bench Top 810x150 by MFC  
 AP26: Bench Top 810x150 by MFC  
 AP27: Bench Top 810x150 by MFC  
 AP28: Bench Top 810x150 by MFC  
 AP29: Bench Top 810x150 by MFC  
 AP30: Bench Top 810x150 by MFC  
 AP31: Bench Top 810x150 by MFC  
 AP32: Bench Top 810x150 by MFC  
 AP33: Bench Top 810x150 by MFC  
 AP34: Bench Top 810x150 by MFC  
 AP35: Bench Top 810x150 by MFC  
 AP36: Bench Top 810x150 by MFC  
 AP37: Bench Top 810x150 by MFC  
 AP38: Bench Top 810x150 by MFC  
 AP39: Bench Top 810x150 by MFC  
 AP40: Bench Top 810x150 by MFC  
 AP41: Bench Top 810x150 by MFC  
 AP42: Bench Top 810x150 by MFC  
 AP43: Bench Top 810x150 by MFC  
 AP44: Bench Top 810x150 by MFC  
 AP45: Bench Top 810x150 by MFC  
 AP46: Bench Top 810x150 by MFC  
 AP47: Bench Top 810x150 by MFC  
 AP48: Bench Top 810x150 by MFC  
 AP49: Bench Top 810x150 by MFC  
 AP50: Bench Top 810x150 by MFC  
 AP51: Bench Top 810x150 by MFC  
 AP52: Bench Top 810x150 by MFC  
 AP53: Bench Top 810x150 by MFC  
 AP54: Bench Top 810x150 by MFC  
 AP55: Bench Top 810x150 by MFC  
 AP56: Bench Top 810x150 by MFC  
 AP57: Bench Top 810x150 by MFC  
 AP58: Bench Top 810x150 by MFC  
 AP59: Bench Top 810x150 by MFC  
 AP60: Bench Top 810x150 by MFC  
 AP61: Bench Top 810x150 by MFC  
 AP62: Bench Top 810x150 by MFC  
 AP63: Bench Top 810x150 by MFC  
 AP64: Bench Top 810x150 by MFC  
 AP65: Bench Top 810x150 by MFC  
 AP66: Bench Top 810x150 by MFC  
 AP67: Bench Top 810x150 by MFC  
 AP68: Bench Top 810x150 by MFC  
 AP69: Bench Top 810x150 by MFC  
 AP70: Bench Top 810x150 by MFC  
 AP71: Bench Top 810x150 by MFC  
 AP72: Bench Top 810x150 by MFC  
 AP73: Bench Top 810x150 by MFC  
 AP74: Bench Top 810x150 by MFC  
 AP75: Bench Top 810x150 by MFC  
 AP76: Bench Top 810x150 by MFC  
 AP77: Bench Top 810x150 by MFC  
 AP78: Bench Top 810x150 by MFC  
 AP79: Bench Top 810x150 by MFC  
 AP80: Bench Top 810x150 by MFC  
 AP81: Bench Top 810x150 by MFC  
 AP82: Bench Top 810x150 by MFC  
 AP83: Bench Top 810x150 by MFC  
 AP84: Bench Top 810x150 by MFC  
 AP85: Bench Top 810x150 by MFC  
 AP86: Bench Top 810x150 by MFC  
 AP87: Bench Top 810x150 by MFC  
 AP88: Bench Top 810x150 by MFC  
 AP89: Bench Top 810x150 by MFC  
 AP90: Bench Top 810x150 by MFC  
 AP91: Bench Top 810x150 by MFC  
 AP92: Bench Top 810x150 by MFC  
 AP93: Bench Top 810x150 by MFC  
 AP94: Bench Top 810x150 by MFC  
 AP95: Bench Top 810x150 by MFC  
 AP96: Bench Top 810x150 by MFC  
 AP97: Bench Top 810x150 by MFC  
 AP98: Bench Top 810x150 by MFC  
 AP99: Bench Top 810x150 by MFC  
 AP100: Bench Top 810x150 by MFC

**1 Bar Detail Plan**  
1 : 20



<b>Revisions</b> No Date Description Ver. App'd A 10.12.2023 CONSTRUCTION DRAWINGS XX App'd			Do not scale drawings. Use figured dimensions only. Check and verify levels and dimensions on site prior to commencement of any work, the preparation of drawings or the fabrication of components. This drawing is copyright and can not be reproduced without written consent.	Client <b>Marion &amp; Will Baker</b> 	True North	Billy Blue College of Design 46-52 Mountain Street, Ultimo, NSW 2007, Australia +61 (0)2 9999 9999 	Project <b>IDC302A Assessment Brief 1</b> 48 Baywater Drive, Wentworth Point, NSW, 2127 Project number <b>23.001</b>	Drawing Title <b>Bar detail plan</b> Drawing Status CONSTRUCTION DRAWINGS NOT FOR CONSTRUCTION	Scale <b>1:20</b> Date <b>10.12.2023</b> Drawn by <b>SF</b>	Drawing No <b>A09</b> Issue <b>A</b>
---	--	--	---	--	------------	--	--	--	--	---

10/12/2023 10:25:47 PM



### LEGEND

Cut Material	
	Existing Structure
	Plasterboard
	Stainless Steel
	Tiles
	Timber
	Concrete

Wall Type	
	Timber Stud Wall 100x50 w/ 13mm PB on each side
	Timber Stud Wall 100x50 w/ 13mm PB on one side and 13mm FC + 2mm glue + 10mm Tile on the other side
	Timber Stud Wall 100x50 w/ 13mm FC + 2mm glue + 10mm Tile on each side
	13mm FC + 2mm glue + 10mm Tile
	Timber Stud Wall 100x50 w/ 13mm FC + 2mm glue + 10mm Tile on one side
	Toilet Cubicle Partition 30mm

Door Type	
	Flush Door 2100x900
	Flush Door 2100x1010

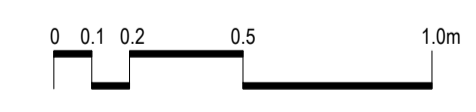
  

Abbreviations	
AP	Appliances
BT	Benchtop
COS	Check on Site
CL	Centre Line
D	Door
DA	Development Application
EQ	Equipment
FC	Fibre Cement
FCL	Finish Ceiling Level
FLL	Finish Floor Level
FU	Furniture
LI	Lighting
PB	Plasterboard
POS	Point of Sale
RCP	Reflected Ceiling Plan
SK	Skirting
SB	Splashback
SS	Stainless Steel
WT	Wall Type
W/	With

Tag Legend	
AP01	Appliances
AP02	Appliances
AP03	Appliances
AP04	Appliances
AP05	Appliances
AP06	Appliances
AP07	Appliances
AP08	Appliances
AP09	Appliances
AP10	Appliances
AP11	Appliances
AP12	Appliances
AP13	Appliances
AP14	Appliances
AP15	Appliances
AP16	Appliances
AP17	Appliances
AP18	Appliances
AP19	Appliances
AP20	Appliances
AP21	Appliances
AP22	Appliances
AP23	Appliances
AP24	Appliances
AP25	Appliances
AP26	Appliances
AP27	Appliances
AP28	Appliances
AP29	Appliances
AP30	Appliances
AP31	Appliances
AP32	Appliances
AP33	Appliances
AP34	Appliances
AP35	Appliances
AP36	Appliances
AP37	Appliances
AP38	Appliances
AP39	Appliances
AP40	Appliances
AP41	Appliances
AP42	Appliances
AP43	Appliances
AP44	Appliances
AP45	Appliances
AP46	Appliances
AP47	Appliances
AP48	Appliances
AP49	Appliances
AP50	Appliances
AP51	Appliances
AP52	Appliances
AP53	Appliances
AP54	Appliances
AP55	Appliances
AP56	Appliances
AP57	Appliances
AP58	Appliances
AP59	Appliances
AP60	Appliances
AP61	Appliances
AP62	Appliances
AP63	Appliances
AP64	Appliances
AP65	Appliances
AP66	Appliances
AP67	Appliances
AP68	Appliances
AP69	Appliances
AP70	Appliances
AP71	Appliances
AP72	Appliances
AP73	Appliances
AP74	Appliances
AP75	Appliances
AP76	Appliances
AP77	Appliances
AP78	Appliances
AP79	Appliances
AP80	Appliances
AP81	Appliances
AP82	Appliances
AP83	Appliances
AP84	Appliances
AP85	Appliances
AP86	Appliances
AP87	Appliances
AP88	Appliances
AP89	Appliances
AP90	Appliances
AP91	Appliances
AP92	Appliances
AP93	Appliances
AP94	Appliances
AP95	Appliances
AP96	Appliances
AP97	Appliances
AP98	Appliances
AP99	Appliances
AP100	Appliances
AP101	Appliances
AP102	Appliances
AP103	Appliances
AP104	Appliances
AP105	Appliances
AP106	Appliances
AP107	Appliances
AP108	Appliances
AP109	Appliances
AP110	Appliances
AP111	Appliances
AP112	Appliances
AP113	Appliances
AP114	Appliances
AP115	Appliances
AP116	Appliances
AP117	Appliances
AP118	Appliances
AP119	Appliances
AP120	Appliances
AP121	Appliances
AP122	Appliances
AP123	Appliances
AP124	Appliances
AP125	Appliances
AP126	Appliances
AP127	Appliances
AP128	Appliances
AP129	Appliances
AP130	Appliances
AP131	Appliances
AP132	Appliances
AP133	Appliances
AP134	Appliances
AP135	Appliances
AP136	Appliances
AP137	Appliances
AP138	Appliances
AP139	Appliances
AP140	Appliances
AP141	Appliances
AP142	Appliances
AP143	Appliances
AP144	Appliances
AP145	Appliances
AP146	Appliances
AP147	Appliances
AP148	Appliances
AP149	Appliances
AP150	Appliances
AP151	Appliances
AP152	Appliances
AP153	Appliances
AP154	Appliances
AP155	Appliances
AP156	Appliances
AP157	Appliances
AP158	Appliances
AP159	Appliances
AP160	Appliances
AP161	Appliances
AP162	Appliances
AP163	Appliances
AP164	Appliances
AP165	Appliances
AP166	Appliances
AP167	Appliances
AP168	Appliances
AP169	Appliances
AP170	Appliances
AP171	Appliances
AP172	Appliances
AP173	Appliances
AP174	Appliances
AP175	Appliances
AP176	Appliances
AP177	Appliances
AP178	Appliances
AP179	Appliances
AP180	Appliances
AP181	Appliances
AP182	Appliances
AP183	Appliances
AP184	Appliances
AP185	Appliances
AP186	Appliances
AP187	Appliances
AP188	Appliances
AP189	Appliances
AP190	Appliances
AP191	Appliances
AP192	Appliances
AP193	Appliances
AP194	Appliances
AP195	Appliances
AP196	Appliances
AP197	Appliances
AP198	Appliances
AP199	Appliances
AP200	Appliances

**1 Bar elevation 1**  
1:20



<b>Revisions</b> No Date Description Ver. App'd A 10.12.2023 CONSTRUCTION DRAWINGS XX App'd			Do not scale drawings. Use figured dimensions only. Check and verify levels and dimensions on site prior to commencement of any work, the preparation of drawings or the fabrication of components. This drawing is copyright and can not be reproduced without written consent.		Client <b>Marion &amp; Will Baker</b>  		True North  Billy Blue College of Design 46-52 Mountain Street, Ultimo, NSW 2007, Australia +61 (0)2 9999 9999  		Project <b>IDC302A Assessment Brief 1</b>  48 Baywater Drive, Wentworth Point, NSW, 2127 Project number <b>23.001</b>		Drawing Title <b>Bar elevation 1</b>  Drawing Status <b>CONSTRUCTION DRAWINGS NOT FOR CONSTRUCTION</b>		Scale <b>1:20</b>  Date <b>10.12.2023</b>  Drawn by <b>SF</b>		Drawing No <b>A10</b>  Issue <b>A</b>	
---	--	--	---	--	--	--	--	--	--	--	--	--	--	--	---	--

**LEGEND**

**Cut Material**

	Existing Structure		Tiles
	Plasterboard		Timber
	Stainless Steel		Concrete

**Wall Type**

	WT1	Timber Stud Wall 100x50 w/ 13mm PB on each side and 13mm FC + 2mm glue + 10mm Tile on the other side
	WT2	Timber Stud Wall 100x50 w/ 13mm PB on one side and 13mm FC + 2mm glue + 10mm Tile on the other side
	WT3	Timber Stud Wall 100x50 w/ 13mm FC + 2mm glue + 10mm Tile on each side
	WT4	13mm FC + 2mm glue + 10mm Tile
	WT5	Timber Stud Wall 100x50 w/ 13mm FC + 2mm glue + 10mm Tile on one side
	WT6	Toilet Cubicle Partition 30mm

**Door Type**

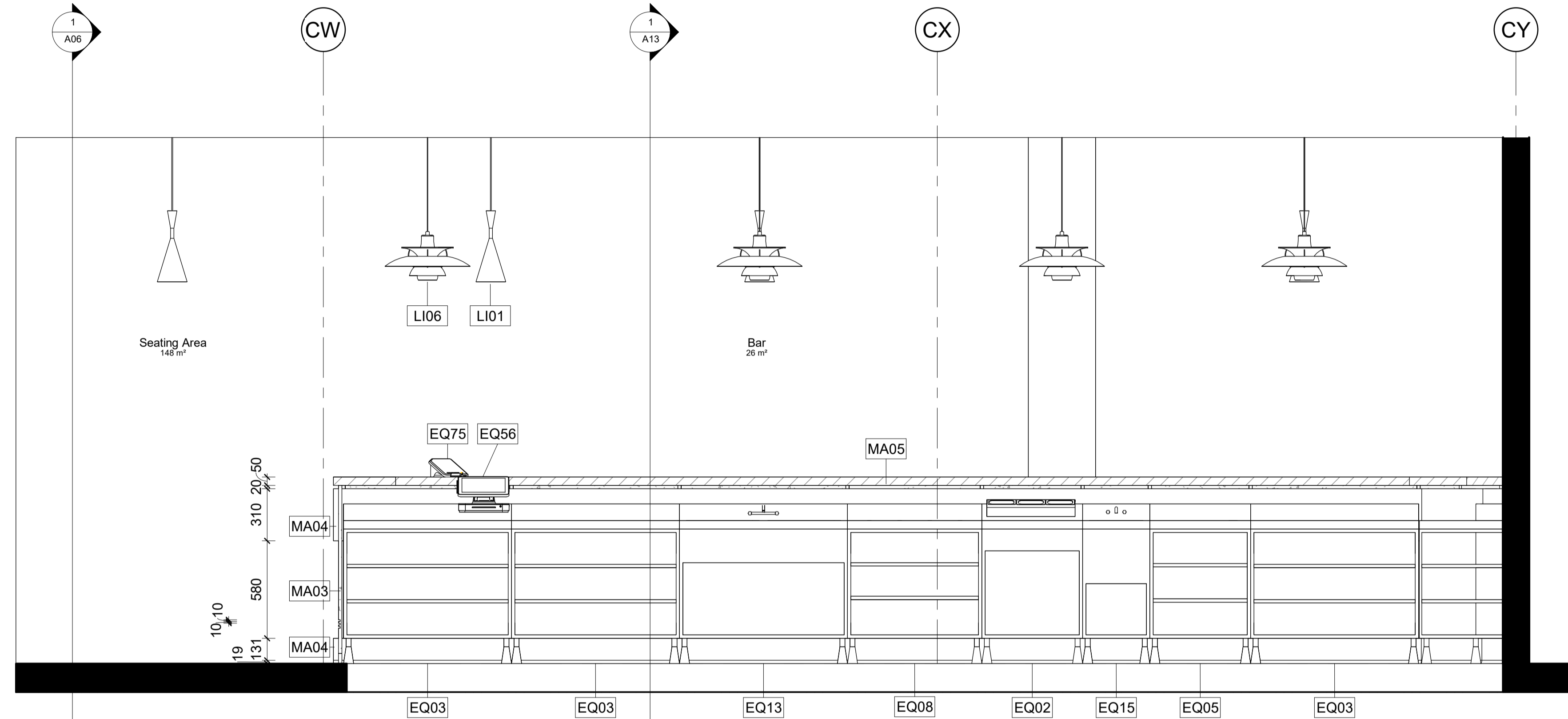
	D01	Flush Door 2100x900		D02	Flush Door 2100x1010
--	-----	---------------------	--	-----	----------------------

**Abbreviations**

AP	Appliances	PB	Plasterboard
BT	Benchtop	POS	Point of Sale
COS	Check on Site	RCP	Reflected Ceiling Plan
CL	Centre Line	SB	Splashback
D	Door	SK	Skirting
DA	Development Application	SS	Stainless Steel
EQ	Equipment	WT	Wall Type
FC	Fibre Cement	W/	With
FCL	Finish Ceiling Level		
FFL	Finish Floor Level		
FU	Furniture		
LI	Lighting		

**Tag Legend**

AP01	Appliance - 1000mm x 500mm
AP02	Appliance - 1000mm x 500mm
AP03	Appliance - 1000mm x 500mm
AP04	Appliance - 1000mm x 500mm
AP05	Appliance - 1000mm x 500mm
AP06	Appliance - 1000mm x 500mm
AP07	Appliance - 1000mm x 500mm
AP08	Appliance - 1000mm x 500mm
AP09	Appliance - 1000mm x 500mm
AP10	Appliance - 1000mm x 500mm
AP11	Appliance - 1000mm x 500mm
AP12	Appliance - 1000mm x 500mm
AP13	Appliance - 1000mm x 500mm
AP14	Appliance - 1000mm x 500mm
AP15	Appliance - 1000mm x 500mm
AP16	Appliance - 1000mm x 500mm
AP17	Appliance - 1000mm x 500mm
AP18	Appliance - 1000mm x 500mm
AP19	Appliance - 1000mm x 500mm
AP20	Appliance - 1000mm x 500mm
AP21	Appliance - 1000mm x 500mm
AP22	Appliance - 1000mm x 500mm
AP23	Appliance - 1000mm x 500mm
AP24	Appliance - 1000mm x 500mm
AP25	Appliance - 1000mm x 500mm
AP26	Appliance - 1000mm x 500mm
AP27	Appliance - 1000mm x 500mm
AP28	Appliance - 1000mm x 500mm
AP29	Appliance - 1000mm x 500mm
AP30	Appliance - 1000mm x 500mm
AP31	Appliance - 1000mm x 500mm
AP32	Appliance - 1000mm x 500mm
AP33	Appliance - 1000mm x 500mm
AP34	Appliance - 1000mm x 500mm
AP35	Appliance - 1000mm x 500mm
AP36	Appliance - 1000mm x 500mm
AP37	Appliance - 1000mm x 500mm
AP38	Appliance - 1000mm x 500mm
AP39	Appliance - 1000mm x 500mm
AP40	Appliance - 1000mm x 500mm
AP41	Appliance - 1000mm x 500mm
AP42	Appliance - 1000mm x 500mm
AP43	Appliance - 1000mm x 500mm
AP44	Appliance - 1000mm x 500mm
AP45	Appliance - 1000mm x 500mm
AP46	Appliance - 1000mm x 500mm
AP47	Appliance - 1000mm x 500mm
AP48	Appliance - 1000mm x 500mm
AP49	Appliance - 1000mm x 500mm
AP50	Appliance - 1000mm x 500mm
AP51	Appliance - 1000mm x 500mm
AP52	Appliance - 1000mm x 500mm
AP53	Appliance - 1000mm x 500mm
AP54	Appliance - 1000mm x 500mm
AP55	Appliance - 1000mm x 500mm
AP56	Appliance - 1000mm x 500mm
AP57	Appliance - 1000mm x 500mm
AP58	Appliance - 1000mm x 500mm
AP59	Appliance - 1000mm x 500mm
AP60	Appliance - 1000mm x 500mm
AP61	Appliance - 1000mm x 500mm
AP62	Appliance - 1000mm x 500mm
AP63	Appliance - 1000mm x 500mm
AP64	Appliance - 1000mm x 500mm
AP65	Appliance - 1000mm x 500mm
AP66	Appliance - 1000mm x 500mm
AP67	Appliance - 1000mm x 500mm
AP68	Appliance - 1000mm x 500mm
AP69	Appliance - 1000mm x 500mm
AP70	Appliance - 1000mm x 500mm
AP71	Appliance - 1000mm x 500mm
AP72	Appliance - 1000mm x 500mm
AP73	Appliance - 1000mm x 500mm
AP74	Appliance - 1000mm x 500mm
AP75	Appliance - 1000mm x 500mm
AP76	Appliance - 1000mm x 500mm
AP77	Appliance - 1000mm x 500mm
AP78	Appliance - 1000mm x 500mm
AP79	Appliance - 1000mm x 500mm
AP80	Appliance - 1000mm x 500mm
AP81	Appliance - 1000mm x 500mm
AP82	Appliance - 1000mm x 500mm
AP83	Appliance - 1000mm x 500mm
AP84	Appliance - 1000mm x 500mm
AP85	Appliance - 1000mm x 500mm
AP86	Appliance - 1000mm x 500mm
AP87	Appliance - 1000mm x 500mm
AP88	Appliance - 1000mm x 500mm
AP89	Appliance - 1000mm x 500mm
AP90	Appliance - 1000mm x 500mm
AP91	Appliance - 1000mm x 500mm
AP92	Appliance - 1000mm x 500mm
AP93	Appliance - 1000mm x 500mm
AP94	Appliance - 1000mm x 500mm
AP95	Appliance - 1000mm x 500mm
AP96	Appliance - 1000mm x 500mm
AP97	Appliance - 1000mm x 500mm
AP98	Appliance - 1000mm x 500mm
AP99	Appliance - 1000mm x 500mm
AP100	Appliance - 1000mm x 500mm
AP101	Appliance - 1000mm x 500mm
AP102	Appliance - 1000mm x 500mm
AP103	Appliance - 1000mm x 500mm
AP104	Appliance - 1000mm x 500mm
AP105	Appliance - 1000mm x 500mm
AP106	Appliance - 1000mm x 500mm
AP107	Appliance - 1000mm x 500mm
AP108	Appliance - 1000mm x 500mm
AP109	Appliance - 1000mm x 500mm
AP110	Appliance - 1000mm x 500mm
AP111	Appliance - 1000mm x 500mm
AP112	Appliance - 1000mm x 500mm
AP113	Appliance - 1000mm x 500mm
AP114	Appliance - 1000mm x 500mm
AP115	Appliance - 1000mm x 500mm
AP116	Appliance - 1000mm x 500mm
AP117	Appliance - 1000mm x 500mm
AP118	Appliance - 1000mm x 500mm
AP119	Appliance - 1000mm x 500mm
AP120	Appliance - 1000mm x 500mm
AP121	Appliance - 1000mm x 500mm
AP122	Appliance - 1000mm x 500mm
AP123	Appliance - 1000mm x 500mm
AP124	Appliance - 1000mm x 500mm
AP125	Appliance - 1000mm x 500mm
AP126	Appliance - 1000mm x 500mm
AP127	Appliance - 1000mm x 500mm
AP128	Appliance - 1000mm x 500mm
AP129	Appliance - 1000mm x 500mm
AP130	Appliance - 1000mm x 500mm
AP131	Appliance - 1000mm x 500mm
AP132	Appliance - 1000mm x 500mm
AP133	Appliance - 1000mm x 500mm
AP134	Appliance - 1000mm x 500mm
AP135	Appliance - 1000mm x 500mm
AP136	Appliance - 1000mm x 500mm
AP137	Appliance - 1000mm x 500mm
AP138	Appliance - 1000mm x 500mm
AP139	Appliance - 1000mm x 500mm
AP140	Appliance - 1000mm x 500mm
AP141	Appliance - 1000mm x 500mm
AP142	Appliance - 1000mm x 500mm
AP143	Appliance - 1000mm x 500mm
AP144	Appliance - 1000mm x 500mm
AP145	Appliance - 1000mm x 500mm
AP146	Appliance - 1000mm x 500mm
AP147	Appliance - 1000mm x 500mm
AP148	Appliance - 1000mm x 500mm
AP149	Appliance - 1000mm x 500mm
AP150	Appliance - 1000mm x 500mm
AP151	Appliance - 1000mm x 500mm
AP152	Appliance - 1000mm x 500mm
AP153	Appliance - 1000mm x 500mm
AP154	Appliance - 1000mm x 500mm
AP155	Appliance - 1000mm x 500mm
AP156	Appliance - 1000mm x 500mm
AP157	Appliance - 1000mm x 500mm
AP158	Appliance - 1000mm x 500mm
AP159	Appliance - 1000mm x 500mm
AP160	Appliance - 1000mm x 500mm
AP161	Appliance - 1000mm x 500mm
AP162	Appliance - 1000mm x 500mm
AP163	Appliance - 1000mm x 500mm
AP164	Appliance - 1000mm x 500mm
AP165	Appliance - 1000mm x 500mm
AP166	Appliance - 1000mm x 500mm
AP167	Appliance - 1000mm x 500mm
AP168	Appliance - 1000mm x 500mm
AP169	Appliance - 1000mm x 500mm
AP170	Appliance - 1000mm x 500mm
AP171	Appliance - 1000mm x 500mm
AP172	Appliance - 1000mm x 500mm
AP173	Appliance - 1000mm x 500mm
AP174	Appliance - 1000mm x 500mm
AP175	Appliance - 1000mm x 500mm
AP176	Appliance - 1000mm x 500mm
AP177	Appliance - 1000mm x 500mm
AP178	Appliance - 1000mm x 500mm
AP179	Appliance - 1000mm x 500mm
AP180	Appliance - 1000mm x 500mm
AP181	Appliance - 1000mm x 500mm
AP182	Appliance - 1000mm x 500mm
AP183	Appliance - 1000mm x 500mm
AP184	Appliance - 1000mm x 500mm
AP185	Appliance - 1000mm x 500mm
AP186	Appliance - 1000mm x 500mm
AP187	Appliance - 1000mm x 500mm
AP188	Appliance - 1000mm x 500mm
AP189	Appliance - 1000mm x 500mm
AP190	Appliance - 1000mm x 500mm
AP191	Appliance - 1000mm x 500mm
AP192	Appliance - 1000mm x 500mm
AP193	Appliance - 1000mm x 500mm
AP194	Appliance - 1000mm x 500mm
AP195	Appliance - 1000mm x 500mm
AP196	Appliance - 1000mm x 500mm
AP197	Appliance - 1000mm x 500mm
AP198	Appliance - 1000mm x 500mm
AP199	Appliance - 1000mm x 500mm
AP200	Appliance - 1000mm x 500mm



**1 Bar elevation 2**  
1:20

Revisions	Description	Ver. App'd
No Date		
A 10.12.2023	CONSTRUCTION DRAWINGS	XX App'd

Do not scale drawings. Use figured dimensions only. Check and verify levels and dimensions on site prior to commencement of any work, the preparation of drawings or the fabrication of components.  
This drawing is copyright and can not be reproduced without written consent.

Client  
**Marion & Will Baker**

True North

Billy Blue College of Design  
46-52 Mountain Street, Ultimo, NSW 2007, Australia  
+61 (0)2 9999 9999

LAUREATE INTERNATIONAL UNIVERSITIES

Project  
**IDC302A Assessment Brief 1**

48 Baywater Drive, Wentworth Point, NSW, 2127

Project number  
**23.001**

Drawing Title  
**Bar elevation 2**

Drawing Status  
CONSTRUCTION DRAWINGS  
NOT FOR CONSTRUCTION

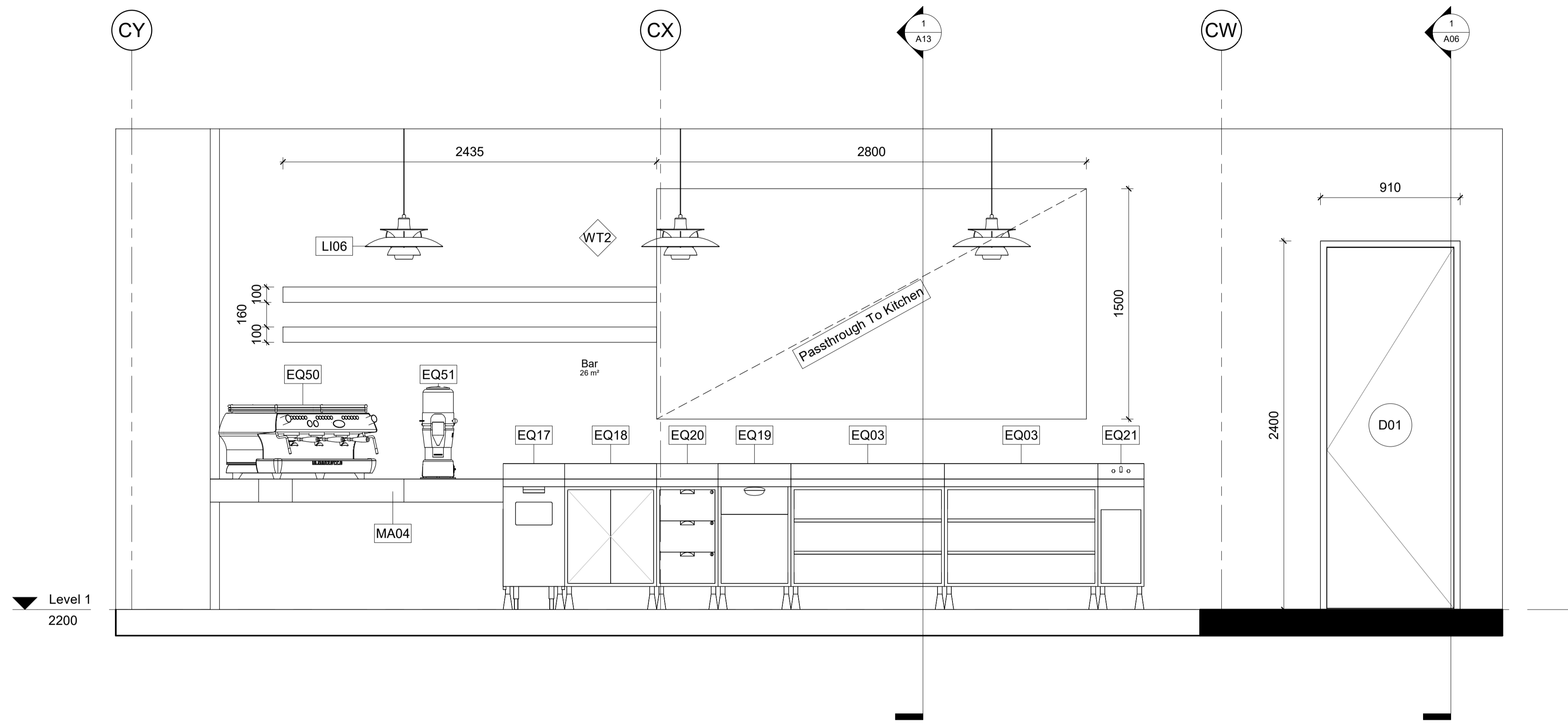
Scale  
**1:20**

Drawing No  
**A11**

Issue  
**A**

Date  
**10.12.2023**

Drawn by  
**SF**



**1 Bar elevation 3**  
1 : 20

LEGEND			
<b>Cut Material</b>			
	Existing Structure		
	Plasterboard		
	Stainless Steel		
	Tiles		
	Timber		
	Concrete		
<b>Wall Type</b>			
	Timber Stud Wall 100x50 w/ 13mm PB on each side		
	Timber Stud Wall 100x50 w/ 13mm PB on one side and 13mm FC + 2mm glue + 10mm Tile on the other side		
	Timber Stud Wall 100x50 w/ 13mm FC + 2mm glue + 10mm Tile on each side		
	13mm FC + 2mm glue + 10mm Tile		
	Timber Stud Wall 100x50 w/ 13mm FC + 2mm glue + 10mm Tile on one side		
	Toilet Cubicle Partition 30mm		
<b>Door Type</b>			
	Flush Door 2100x900		
	Flush Door 2100x1010		
<b>Abbreviations</b>			
AP	Appliances	PB	Plasterboard
BT	Benchtop	POS	Point of Sale
COS	Check on Site	RCP	Reflected Ceiling Plan
CL	Centre Line	SB	Splashback
D	Door	SK	Skirting
DA	Development Application	SS	Stainless Steel
EQ	Equipment	WT	Wall Type
FC	Fibre Cement	W/	With
FCL	Finish Ceiling Level		
FFL	Finish Floor Level		
FU	Furniture		
LI	Lighting		
<b>Tag Legend</b>			
<p>AP01 Aluminium Profile 60x60x6 by MC  AP02 Glass Door aluminium 810x1000 by MC  AP03 Glass Door aluminium 810x1000 by MC  AP04 Glass Door aluminium 810x1000 by MC  AP05 Glass Door aluminium 810x1000 by MC  AP06 Glass Door aluminium 810x1000 by MC  AP07 Glass Door aluminium 810x1000 by MC  AP08 Glass Door aluminium 810x1000 by MC  AP09 Glass Door aluminium 810x1000 by MC  AP10 Glass Door aluminium 810x1000 by MC  AP11 Glass Door aluminium 810x1000 by MC  AP12 Glass Door aluminium 810x1000 by MC  AP13 Glass Door aluminium 810x1000 by MC  AP14 Glass Door aluminium 810x1000 by MC  AP15 Glass Door aluminium 810x1000 by MC  AP16 Glass Door aluminium 810x1000 by MC  AP17 Glass Door aluminium 810x1000 by MC  AP18 Glass Door aluminium 810x1000 by MC  AP19 Glass Door aluminium 810x1000 by MC  AP20 Glass Door aluminium 810x1000 by MC  AP21 Glass Door aluminium 810x1000 by MC  AP22 Glass Door aluminium 810x1000 by MC  AP23 Glass Door aluminium 810x1000 by MC  AP24 Glass Door aluminium 810x1000 by MC  AP25 Glass Door aluminium 810x1000 by MC  AP26 Glass Door aluminium 810x1000 by MC  AP27 Glass Door aluminium 810x1000 by MC  AP28 Glass Door aluminium 810x1000 by MC  AP29 Glass Door aluminium 810x1000 by MC  AP30 Glass Door aluminium 810x1000 by MC  AP31 Glass Door aluminium 810x1000 by MC  AP32 Glass Door aluminium 810x1000 by MC  AP33 Glass Door aluminium 810x1000 by MC  AP34 Glass Door aluminium 810x1000 by MC  AP35 Glass Door aluminium 810x1000 by MC  AP36 Glass Door aluminium 810x1000 by MC  AP37 Glass Door aluminium 810x1000 by MC  AP38 Glass Door aluminium 810x1000 by MC  AP39 Glass Door aluminium 810x1000 by MC  AP40 Glass Door aluminium 810x1000 by MC  AP41 Glass Door aluminium 810x1000 by MC  AP42 Glass Door aluminium 810x1000 by MC  AP43 Glass Door aluminium 810x1000 by MC  AP44 Glass Door aluminium 810x1000 by MC  AP45 Glass Door aluminium 810x1000 by MC  AP46 Glass Door aluminium 810x1000 by MC  AP47 Glass Door aluminium 810x1000 by MC  AP48 Glass Door aluminium 810x1000 by MC  AP49 Glass Door aluminium 810x1000 by MC  AP50 Glass Door aluminium 810x1000 by MC  AP51 Glass Door aluminium 810x1000 by MC  AP52 Glass Door aluminium 810x1000 by MC  AP53 Glass Door aluminium 810x1000 by MC  AP54 Glass Door aluminium 810x1000 by MC  AP55 Glass Door aluminium 810x1000 by MC  AP56 Glass Door aluminium 810x1000 by MC  AP57 Glass Door aluminium 810x1000 by MC  AP58 Glass Door aluminium 810x1000 by MC  AP59 Glass Door aluminium 810x1000 by MC  AP60 Glass Door aluminium 810x1000 by MC  AP61 Glass Door aluminium 810x1000 by MC  AP62 Glass Door aluminium 810x1000 by MC  AP63 Glass Door aluminium 810x1000 by MC  AP64 Glass Door aluminium 810x1000 by MC  AP65 Glass Door aluminium 810x1000 by MC  AP66 Glass Door aluminium 810x1000 by MC  AP67 Glass Door aluminium 810x1000 by MC  AP68 Glass Door aluminium 810x1000 by MC  AP69 Glass Door aluminium 810x1000 by MC  AP70 Glass Door aluminium 810x1000 by MC  AP71 Glass Door aluminium 810x1000 by MC  AP72 Glass Door aluminium 810x1000 by MC  AP73 Glass Door aluminium 810x1000 by MC  AP74 Glass Door aluminium 810x1000 by MC  AP75 Glass Door aluminium 810x1000 by MC  AP76 Glass Door aluminium 810x1000 by MC  AP77 Glass Door aluminium 810x1000 by MC  AP78 Glass Door aluminium 810x1000 by MC  AP79 Glass Door aluminium 810x1000 by MC  AP80 Glass Door aluminium 810x1000 by MC  AP81 Glass Door aluminium 810x1000 by MC  AP82 Glass Door aluminium 810x1000 by MC  AP83 Glass Door aluminium 810x1000 by MC  AP84 Glass Door aluminium 810x1000 by MC  AP85 Glass Door aluminium 810x1000 by MC  AP86 Glass Door aluminium 810x1000 by MC  AP87 Glass Door aluminium 810x1000 by MC  AP88 Glass Door aluminium 810x1000 by MC  AP89 Glass Door aluminium 810x1000 by MC  AP90 Glass Door aluminium 810x1000 by MC  AP91 Glass Door aluminium 810x1000 by MC  AP92 Glass Door aluminium 810x1000 by MC  AP93 Glass Door aluminium 810x1000 by MC  AP94 Glass Door aluminium 810x1000 by MC  AP95 Glass Door aluminium 810x1000 by MC  AP96 Glass Door aluminium 810x1000 by MC  AP97 Glass Door aluminium 810x1000 by MC  AP98 Glass Door aluminium 810x1000 by MC  AP99 Glass Door aluminium 810x1000 by MC  AP100 Glass Door aluminium 810x1000 by MC</p>			

Revisions		
No	Date	Description
A	10.12.2023	CONSTRUCTION DRAWINGS

Do not scale drawings. Use figured dimensions only. Check and verify levels and dimensions on site prior to commencement of any work, the preparation of drawings or the fabrication of components. This drawing is copyright and can not be reproduced without written consent.

Client  
**Marion & Will Baker**

True North

Billy Blue College of Design  
46-52 Mountain Street, Ultimo, NSW 2007, Australia  
+61 (0)2 9999 9999

Project  
**IDC302A Assessment Brief 1**

48 Baywater Drive, Wentworth Point, NSW, 2127

Project number  
**23.001**

Drawing Title  
**Bar elevation 3**

Drawing Status  
**CONSTRUCTION DRAWINGS NOT FOR CONSTRUCTION**

Scale  
**1:20**

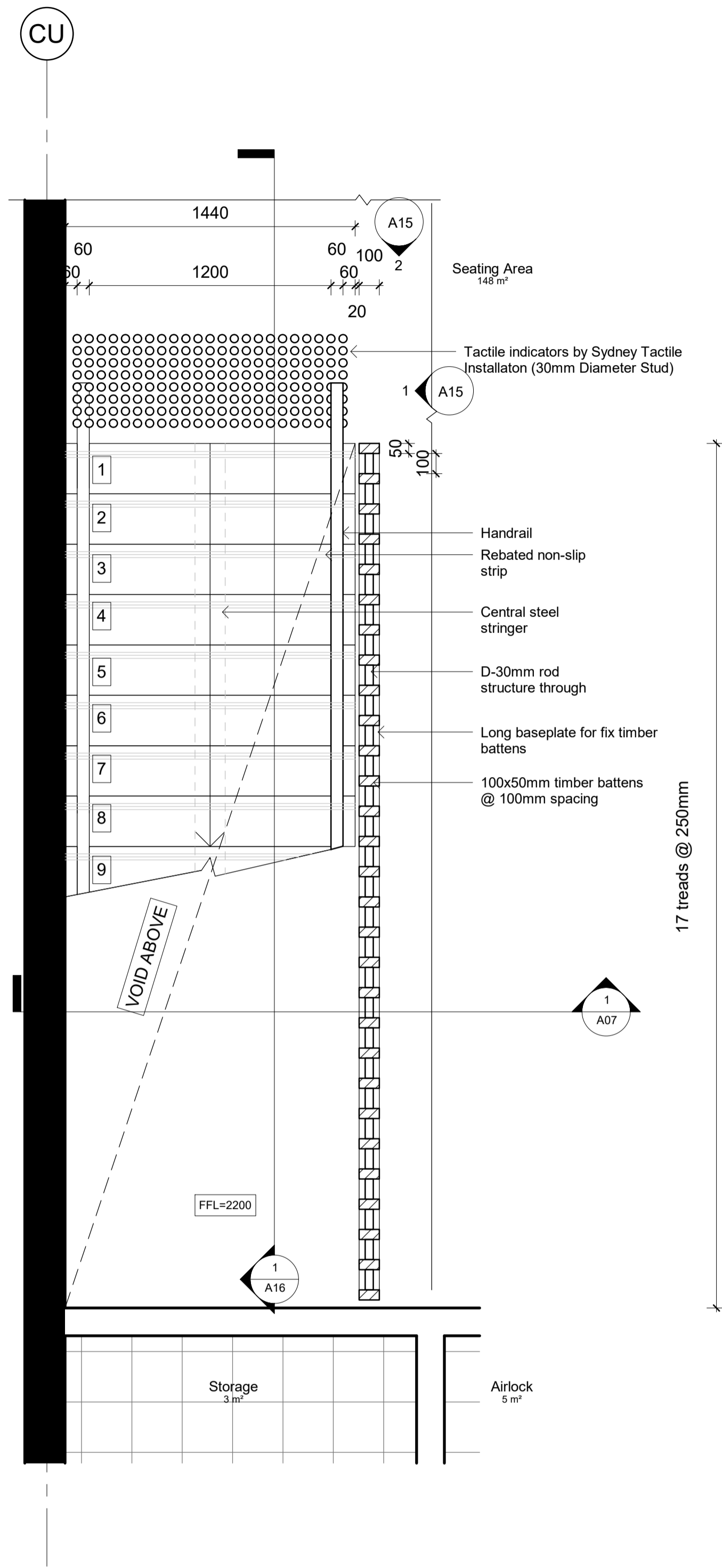
Drawing No  
**A12**

Issue  
**A**

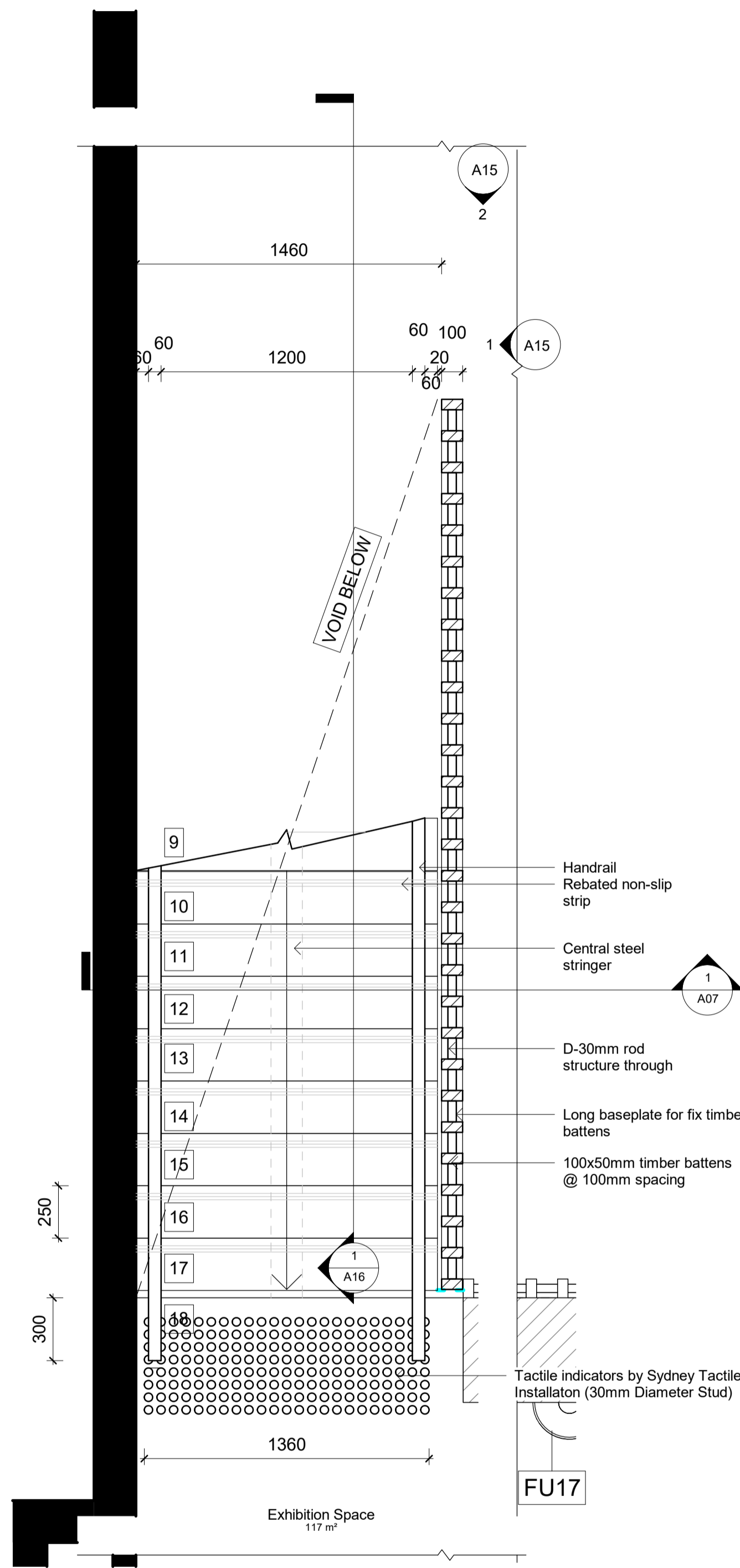
Date  
**10.12.2023**

Drawn by  
**SF**





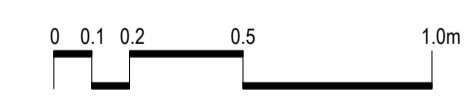
1 Stair lower plan  
1:20



2 Stair upper plan  
1:20

LEGEND

Cut Material			
	Existing Structure		
	Plasterboard		
	Stainless Steel		
	Tiles		
	Timber		
	Concrete		
Wall Type			
	WT1 Timber Stud Wall 100x50 w/ 13mm PB on each side		
	WT2 Timber Stud Wall 100x50 w/ 13mm PB on one side and 13mm FC + 2mm glue + 10mm Tile on the other side		
	WT3 Timber Stud Wall 100x50 w/ 13mm FC + 2mm glue + 10mm Tile on each side		
	WT4 13mm FC + 2mm glue + 10mm Tile		
	WT5 Timber Stud Wall 100x50 w/ 13mm FC + 2mm glue + 10mm Tile on one side		
	WT6 Toilet Cubicle Partition 30mm		
Door Type			
	D01 Flush Door 2100x900		
	D02 Flush Door 2100x1010		
Abbreviations			
AP	Appliances	PB	Plasterboard
BT	Berchtop	PCS	Point of Sale
COS	Check on Site	RCP	Reflected Ceiling Plan
CL	Centre Line	SB	Splashback
D	Door	SK	Skirting
DA	Development Application	SS	Stainless Steel
EQ	Equipment	WT	Wall Type
FC	Fibre Cement	W/	With
FCL	Finish Ceiling Level		
FFL	Finish Floor Level		
FU	Furniture		
LI	Lighting		
Tag Legend			
AP1	Appliances	BT1	Berchtop
AP2	Appliances	BT2	Berchtop
AP3	Appliances	BT3	Berchtop
AP4	Appliances	BT4	Berchtop
AP5	Appliances	BT5	Berchtop
AP6	Appliances	BT6	Berchtop
AP7	Appliances	BT7	Berchtop
AP8	Appliances	BT8	Berchtop
AP9	Appliances	BT9	Berchtop
AP10	Appliances	BT10	Berchtop
AP11	Appliances	BT11	Berchtop
AP12	Appliances	BT12	Berchtop
AP13	Appliances	BT13	Berchtop
AP14	Appliances	BT14	Berchtop
AP15	Appliances	BT15	Berchtop
AP16	Appliances	BT16	Berchtop
AP17	Appliances	BT17	Berchtop
AP18	Appliances	BT18	Berchtop
AP19	Appliances	BT19	Berchtop
AP20	Appliances	BT20	Berchtop
AP21	Appliances	BT21	Berchtop
AP22	Appliances	BT22	Berchtop
AP23	Appliances	BT23	Berchtop
AP24	Appliances	BT24	Berchtop
AP25	Appliances	BT25	Berchtop
AP26	Appliances	BT26	Berchtop
AP27	Appliances	BT27	Berchtop
AP28	Appliances	BT28	Berchtop
AP29	Appliances	BT29	Berchtop
AP30	Appliances	BT30	Berchtop
AP31	Appliances	BT31	Berchtop
AP32	Appliances	BT32	Berchtop
AP33	Appliances	BT33	Berchtop
AP34	Appliances	BT34	Berchtop
AP35	Appliances	BT35	Berchtop
AP36	Appliances	BT36	Berchtop
AP37	Appliances	BT37	Berchtop
AP38	Appliances	BT38	Berchtop
AP39	Appliances	BT39	Berchtop
AP40	Appliances	BT40	Berchtop
AP41	Appliances	BT41	Berchtop
AP42	Appliances	BT42	Berchtop
AP43	Appliances	BT43	Berchtop
AP44	Appliances	BT44	Berchtop
AP45	Appliances	BT45	Berchtop
AP46	Appliances	BT46	Berchtop
AP47	Appliances	BT47	Berchtop
AP48	Appliances	BT48	Berchtop
AP49	Appliances	BT49	Berchtop
AP50	Appliances	BT50	Berchtop
AP51	Appliances	BT51	Berchtop
AP52	Appliances	BT52	Berchtop
AP53	Appliances	BT53	Berchtop
AP54	Appliances	BT54	Berchtop
AP55	Appliances	BT55	Berchtop
AP56	Appliances	BT56	Berchtop
AP57	Appliances	BT57	Berchtop
AP58	Appliances	BT58	Berchtop
AP59	Appliances	BT59	Berchtop
AP60	Appliances	BT60	Berchtop
AP61	Appliances	BT61	Berchtop
AP62	Appliances	BT62	Berchtop
AP63	Appliances	BT63	Berchtop
AP64	Appliances	BT64	Berchtop
AP65	Appliances	BT65	Berchtop
AP66	Appliances	BT66	Berchtop
AP67	Appliances	BT67	Berchtop
AP68	Appliances	BT68	Berchtop
AP69	Appliances	BT69	Berchtop
AP70	Appliances	BT70	Berchtop
AP71	Appliances	BT71	Berchtop
AP72	Appliances	BT72	Berchtop
AP73	Appliances	BT73	Berchtop
AP74	Appliances	BT74	Berchtop
AP75	Appliances	BT75	Berchtop
AP76	Appliances	BT76	Berchtop
AP77	Appliances	BT77	Berchtop
AP78	Appliances	BT78	Berchtop
AP79	Appliances	BT79	Berchtop
AP80	Appliances	BT80	Berchtop
AP81	Appliances	BT81	Berchtop
AP82	Appliances	BT82	Berchtop
AP83	Appliances	BT83	Berchtop
AP84	Appliances	BT84	Berchtop
AP85	Appliances	BT85	Berchtop
AP86	Appliances	BT86	Berchtop
AP87	Appliances	BT87	Berchtop
AP88	Appliances	BT88	Berchtop
AP89	Appliances	BT89	Berchtop
AP90	Appliances	BT90	Berchtop
AP91	Appliances	BT91	Berchtop
AP92	Appliances	BT92	Berchtop
AP93	Appliances	BT93	Berchtop
AP94	Appliances	BT94	Berchtop
AP95	Appliances	BT95	Berchtop
AP96	Appliances	BT96	Berchtop
AP97	Appliances	BT97	Berchtop
AP98	Appliances	BT98	Berchtop
AP99	Appliances	BT99	Berchtop
AP100	Appliances	BT100	Berchtop



Revisions	Description	Ver. App'd
No	Date	
A	10.12.2023	XX App'd

Do not scale drawings. Use figured dimensions only. Check and verify levels and dimensions on site prior to commencement of any work, the preparation of drawings or the fabrication of components. This drawing is copyright and can not be reproduced without written consent.

Client  
Marion & Will Baker

True North

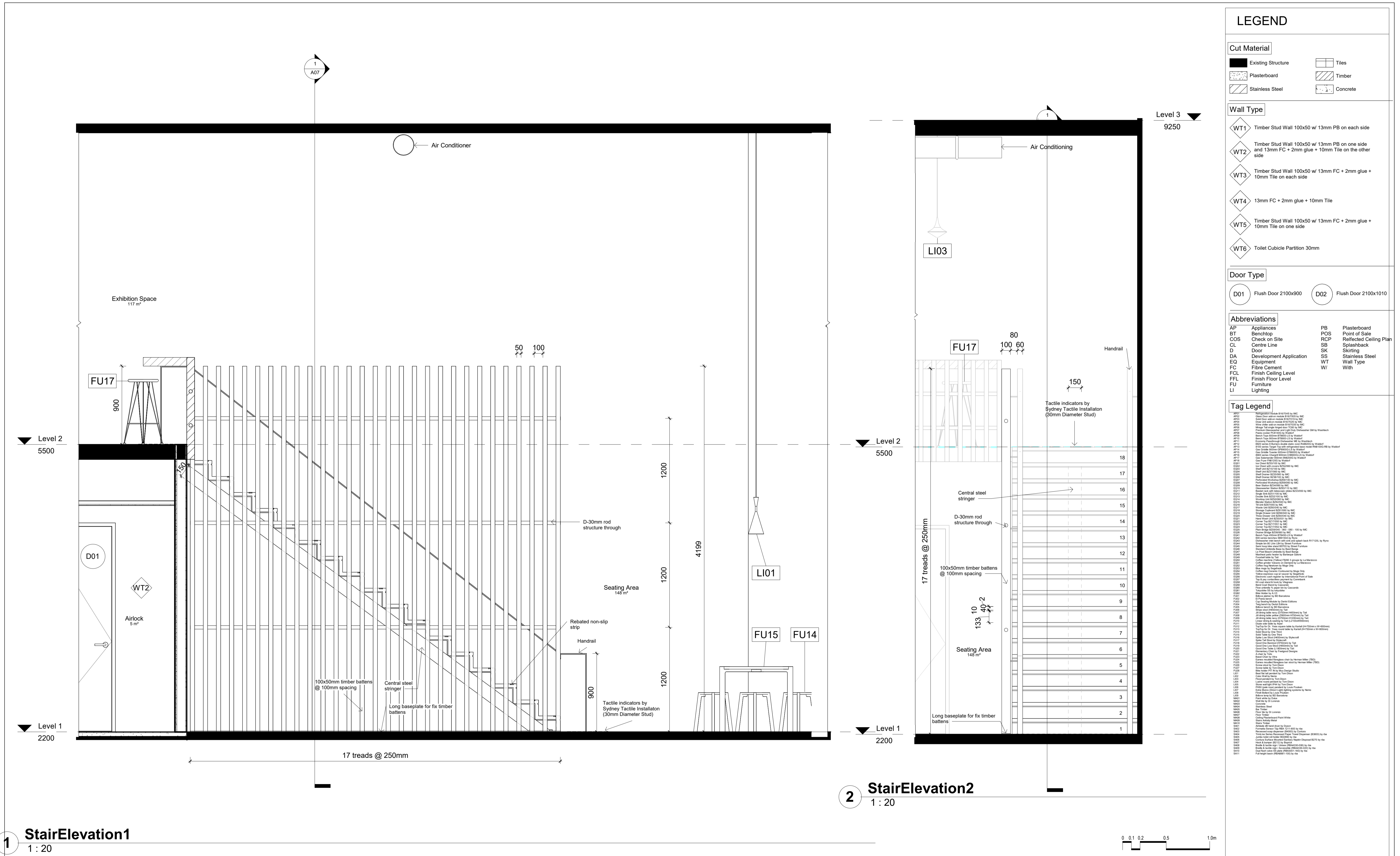
Billy Blue College of Design  
46-52 Mountain Street, Ultimo, NSW 2007, Australia  
+61 (0)2 9999 9999

LAUREATE INTERNATIONAL UNIVERSITIES

Project  
IDC302A Assessment Brief 1  
48 Baywater Drive, Wentworth Point, NSW, 2127  
Project number  
23.001

Drawing Title  
Stair lower & upper plans  
Drawing Status  
CONSTRUCTION DRAWINGS  
NOT FOR CONSTRUCTION

Scale  
1:20  
Date  
10.12.2023  
Drawing No  
A14  
Issue  
A  
Drawn by  
SF



### LEGEND

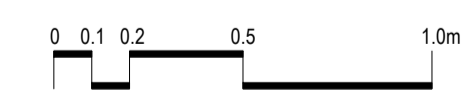
Cut Material			
	Existing Structure		
	Plasterboard		
	Stainless Steel		
	Tiles		
	Timber		
	Concrete		
Wall Type			
	WT1 Timber Stud Wall 100x50 w/ 13mm PB on each side		
	WT2 Timber Stud Wall 100x50 w/ 13mm PB on one side and 13mm FC + 2mm glue + 10mm Tile on the other side		
	WT3 Timber Stud Wall 100x50 w/ 13mm FC + 2mm glue + 10mm Tile on each side		
	WT4 13mm FC + 2mm glue + 10mm Tile		
	WT5 Timber Stud Wall 100x50 w/ 13mm FC + 2mm glue + 10mm Tile on one side		
	WT6 Toilet Cubicle Partition 30mm		
Door Type			
	D01 Flush Door 2100x900		
	D02 Flush Door 2100x1010		
Abbreviations			
AP	Appliances	PB	Plasterboard
BT	Benchmark	POS	Point of Sale
COS	Check on Site	RCP	Reflected Ceiling Plan
CL	Centre Line	SB	Splashback
D	Door	SK	Skirting
DA	Development Application	SS	Stainless Steel
EQ	Equipment	WT	Wall Type
FC	Fibre Cement	W/	With
FCL	Finish Ceiling Level		
FFL	Finish Floor Level		
FU	Furniture		
LI	Lighting		

### Tag Legend

AP1	Appliances
AP2	Appliances
AP3	Appliances
AP4	Appliances
AP5	Appliances
AP6	Appliances
AP7	Appliances
AP8	Appliances
AP9	Appliances
AP10	Appliances
AP11	Appliances
AP12	Appliances
AP13	Appliances
AP14	Appliances
AP15	Appliances
AP16	Appliances
AP17	Appliances
AP18	Appliances
AP19	Appliances
AP20	Appliances
AP21	Appliances
AP22	Appliances
AP23	Appliances
AP24	Appliances
AP25	Appliances
AP26	Appliances
AP27	Appliances
AP28	Appliances
AP29	Appliances
AP30	Appliances
AP31	Appliances
AP32	Appliances
AP33	Appliances
AP34	Appliances
AP35	Appliances
AP36	Appliances
AP37	Appliances
AP38	Appliances
AP39	Appliances
AP40	Appliances
AP41	Appliances
AP42	Appliances
AP43	Appliances
AP44	Appliances
AP45	Appliances
AP46	Appliances
AP47	Appliances
AP48	Appliances
AP49	Appliances
AP50	Appliances
AP51	Appliances
AP52	Appliances
AP53	Appliances
AP54	Appliances
AP55	Appliances
AP56	Appliances
AP57	Appliances
AP58	Appliances
AP59	Appliances
AP60	Appliances
AP61	Appliances
AP62	Appliances
AP63	Appliances
AP64	Appliances
AP65	Appliances
AP66	Appliances
AP67	Appliances
AP68	Appliances
AP69	Appliances
AP70	Appliances
AP71	Appliances
AP72	Appliances
AP73	Appliances
AP74	Appliances
AP75	Appliances
AP76	Appliances
AP77	Appliances
AP78	Appliances
AP79	Appliances
AP80	Appliances
AP81	Appliances
AP82	Appliances
AP83	Appliances
AP84	Appliances
AP85	Appliances
AP86	Appliances
AP87	Appliances
AP88	Appliances
AP89	Appliances
AP90	Appliances
AP91	Appliances
AP92	Appliances
AP93	Appliances
AP94	Appliances
AP95	Appliances
AP96	Appliances
AP97	Appliances
AP98	Appliances
AP99	Appliances
AP100	Appliances

**1 StairElevation1**  
1 : 20

**2 StairElevation2**  
1 : 20



Revisions	Description	Ver. App'd
No Date		
A 10.12.2023	CONSTRUCTION DRAWINGS	XX App'd

Do not scale drawings. Use figured dimensions only. Check and verify levels and dimensions on site prior to commencement of any work, the preparation of drawings or the fabrication of components. This drawing is copyright and can not be reproduced without written consent.

Client  
**Marion & Will Baker**

True North

Billy Blue College of Design  
46-52 Mountain Street, Ultimo, NSW 2007, Australia  
+61 (0)2 9999 9999

Project  
**IDC302A Assessment Brief 1**

48 Baywater Drive, Wentworth Point, NSW, 2127

Project number  
**23.001**

Drawing Title  
**Stair Elevation 1**

Drawing Status  
**CONSTRUCTION DRAWINGS NOT FOR CONSTRUCTION**

Scale  
**1:20**

Drawing No  
**A15**

Issue  
**A**

Date  
**10.12.2023**

Drawn by  
**SF**

