

Autodesk Office Space

Location:

1 Bligh St, Sydney, NSW 2000.

Pre-Design Condition:

Built in 2011, 1 Bligh St is an elliptical skysrise on a corner in Sydney.

Client Brief:

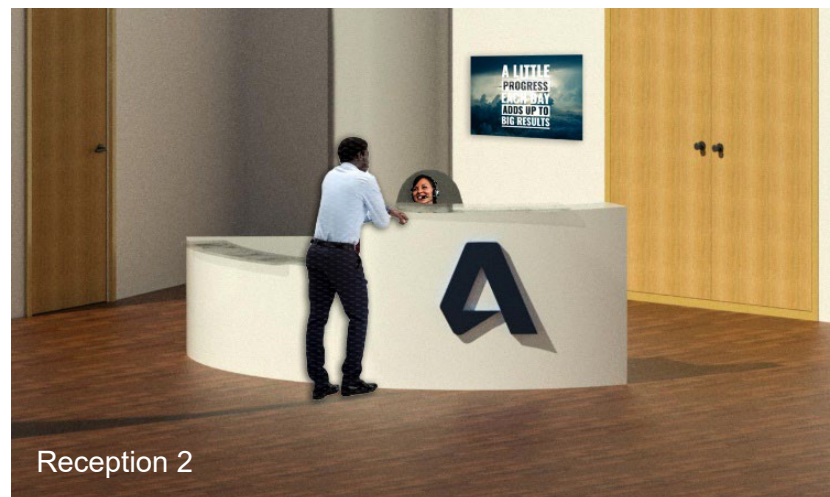
- Create a functional office layout for Autodesk
- Office fitout that represents innovation
- Incorporate virtual meeting pods
- Reception is a statement room that attracts
- Colour scheme that connects with identity

Software: Revit, Photoshop, AutoCAD.

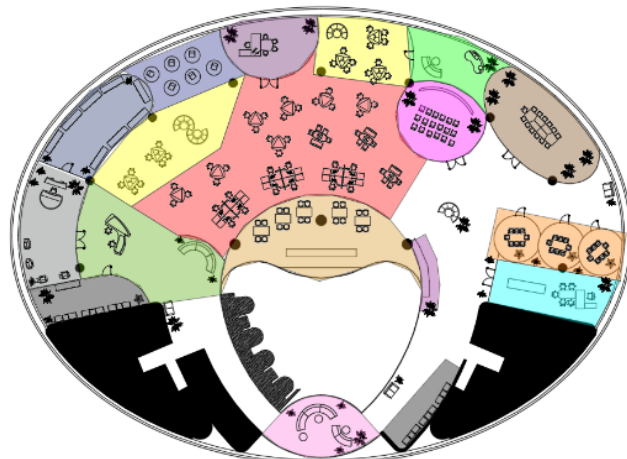
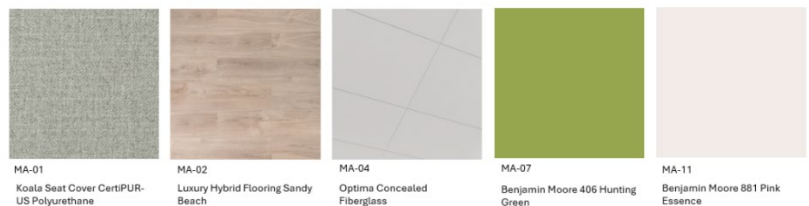
Concept and Features:

Level 22 of a 27-story high-rise in Sydney is leased by Autodesk, a subsidiary of Adobe, specialising in 3D imaging and modelling software. The office design promotes a cohesive flow between spaces, with a green accent wall in the reception area connecting seamlessly to office greenery. The floor includes virtual meeting pods and a creative studio to meet Autodesk's diverse needs. The reception area (22.01) features a large white desk with the Autodesk logo, setting a welcoming tone and fostering collaboration for its 100-150 employees. The space encourages open communication and inclusivity from the moment clients and employees enter.

Visualisations



Materials



Level 22 Floorplan

Wineglass Bay Estate Cabins

Location:

1100 Coles Bay Rd, Coles Bay, TAS 7215.

Pre-Design Condition:

The Wineglass Bay Estate borders the Freycinet National Park with a vineyard at the edge of this iconic Tasmanian Destination.

Client Brief:

- Single room accommodation
- Natural, cost effective, environmentally supportive materials
- Functional and strong performance in colder climates
- Natural tones
- Maximise ceiling heights and outlook on lagoon

Software: Revit

Concept and Features:

Wineglass Bay Estate is a lakeside retreat near Freycinet National Park, offering luxurious accommodations in a serene natural setting.

The spacious cabin studios feature a cozy fireplace, kitchenette, and a bathroom with an outdoor shower, designed for privacy with anti-slip tiles and surrounding shrubbery.

Large windows allow natural light and offer panoramic views, whether guests are relaxing, cooking, or lounging.

The design emphasizes sustainability, with wooden floors, walls, and grey tiles in the outdoor shower that blend seamlessly with the environment.

Visualisations



Materials



Jordan Wilderness Steel

Jordan Standard / Compact Laminate Classic Oak

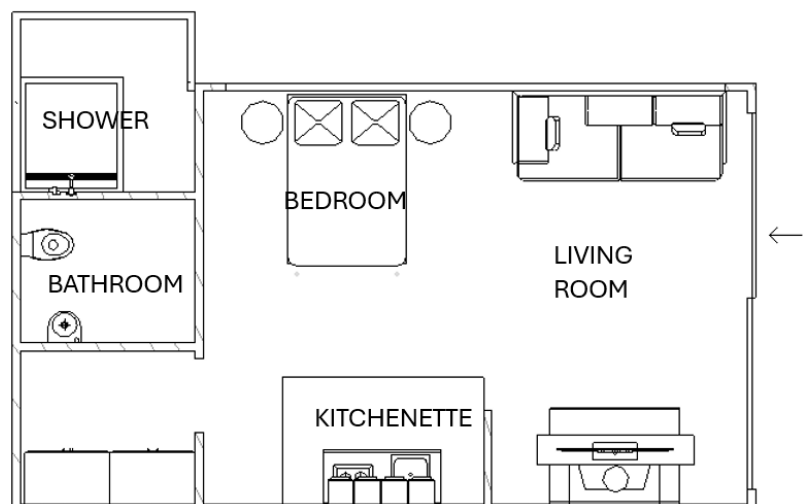
Kustom Timber Highland

Melbourne Bricks Fire Bricks

ANJ Swivel Rocker Fabric Recliner Chair

Ceres Fair Wood Log

Plan



Le Velo Cafe

Location:

48 Baywater Drive, Wentworth Point, NSW, 2127.

Pre-Design Condition:

The building is the bottom 2 levels of a pre existing apartment complex.

Client Brief:

- Bold colour
- Cater to local community and passers by
- Relaxed, casual, electric and playful atmosphere
- Open plan for maximum flexibility
- Cater to the avid runners and cyclists

Software: Revit, Photoshop, Hand Sketching

Concept and Features:

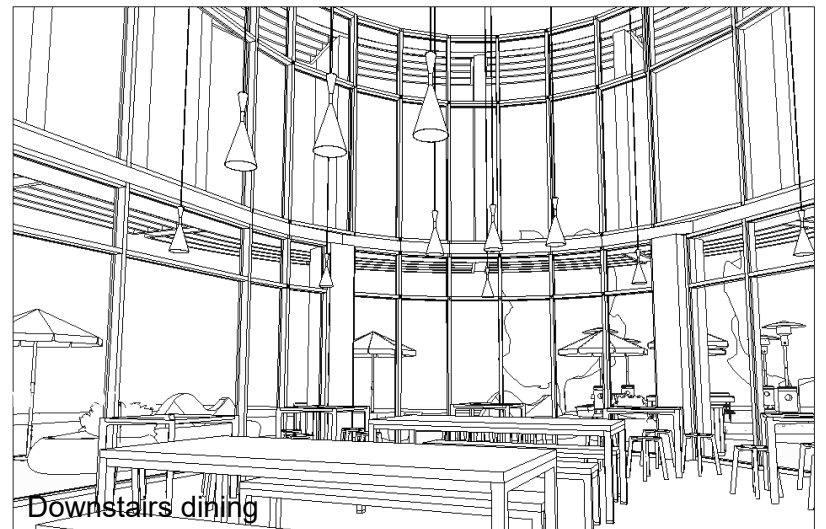
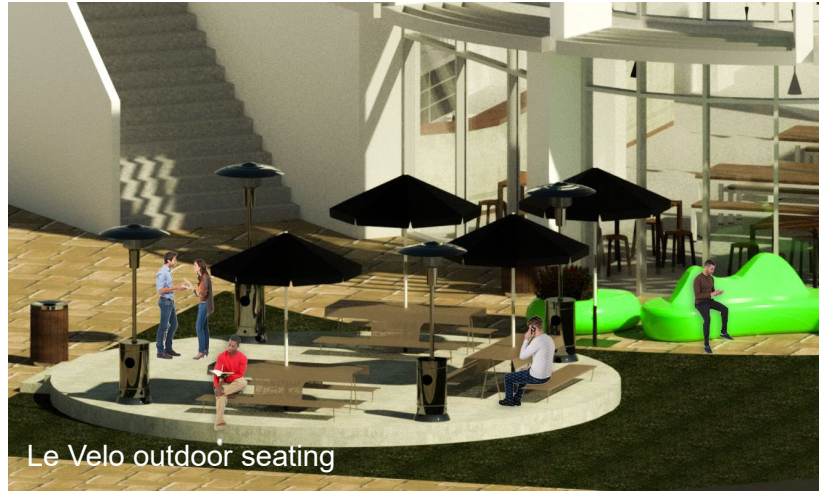
Le Velo Café, located at Wentworth Point's waterfront in Sydney, offers a perfect brew and a relaxed atmosphere for socializing and dining.

With a fully equipped kitchen, bar, and restrooms, the café serves meals and pastries that complement its coffee.

The open-plan dining area includes standing tables, group seating, and space in front of the bar for ordering or waiting.

To serve the active local community, the café provides bike racks for cyclists. Outdoor seating on an elevated, undercover platform offers a great spot to enjoy coffee.

Visualisations



Materials



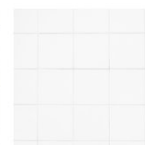
Nationwide Timber
Australia Chestnut
Flooring



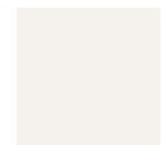
Alltrade Stainless Steel



Bastion Concrete



National Tiles Pressed
Edge White Gloss Tile



Benjamin Moore
879 White
Opulence